




Enjeux écologiques Légende

Contexte :






-  Emprise technique
-  Limite départementale
-  Limite communale
-  Voie ferrée

Cours d'eau

Régime :

-  Intermittent
-  Permanent
-  Plan d'eau











Enjeux écologiques :

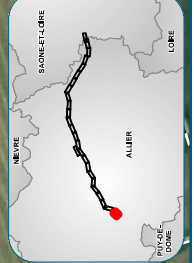
-  Majeur
-  Très fort
-  Fort
-  Assez-fort
-  Moyen

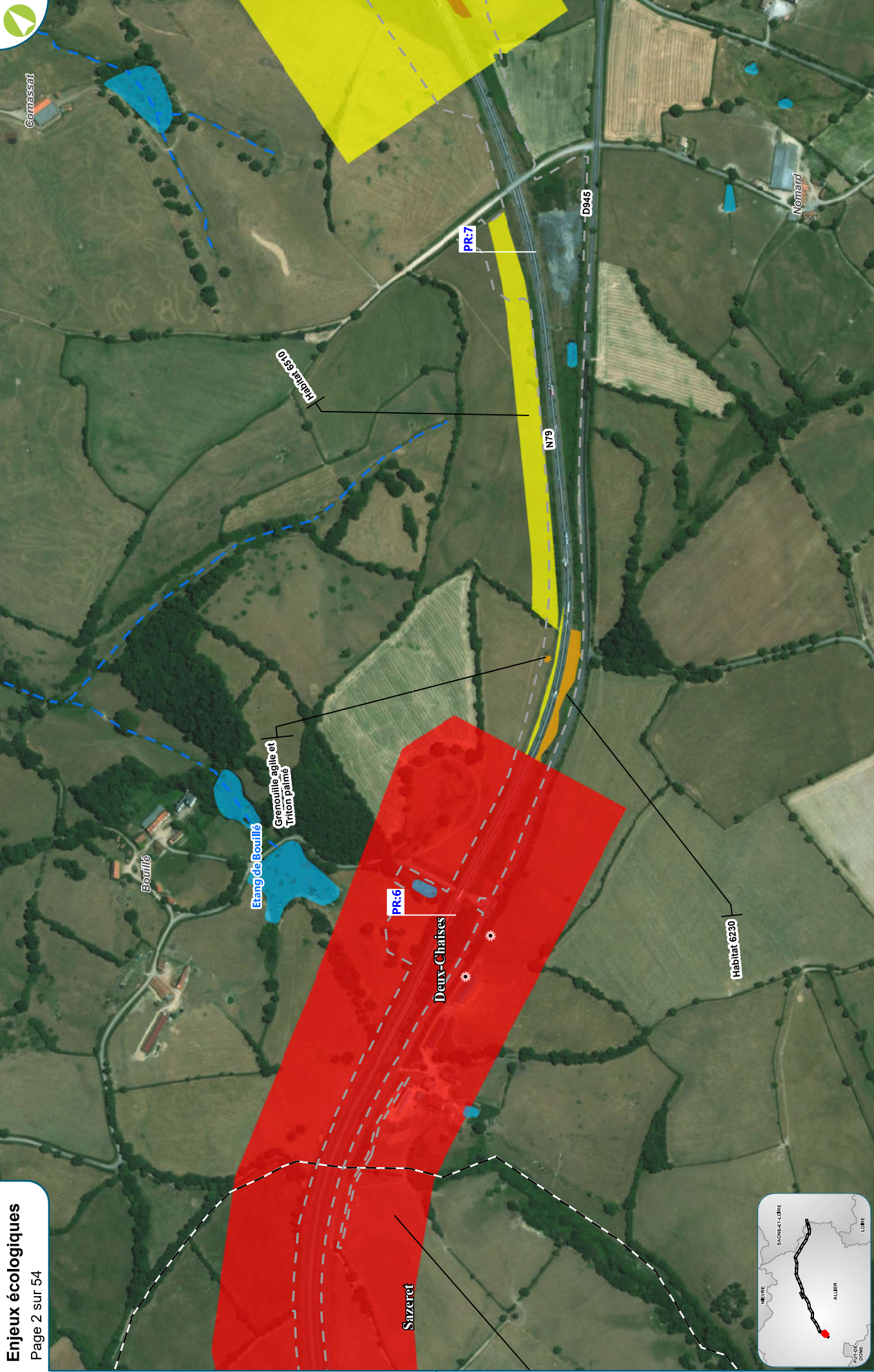
Flore patrimoniale protégée :

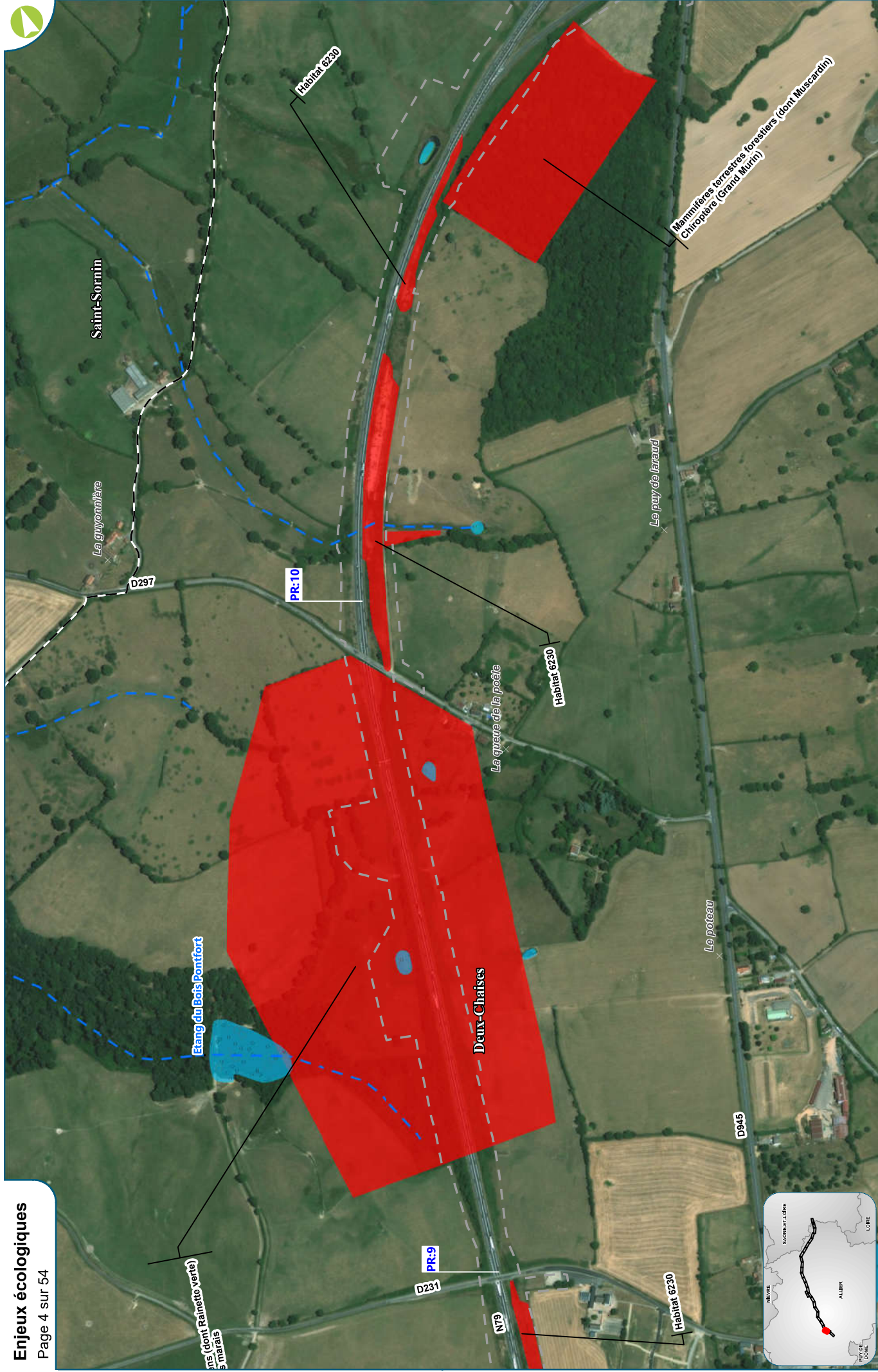
-  *Cyperus michelianus*
-  *Gratiola officinalis*
-  *Pulicaria vulgaris*
-  *Ulmus laevis*
-  *Fraxinus angustifolia*

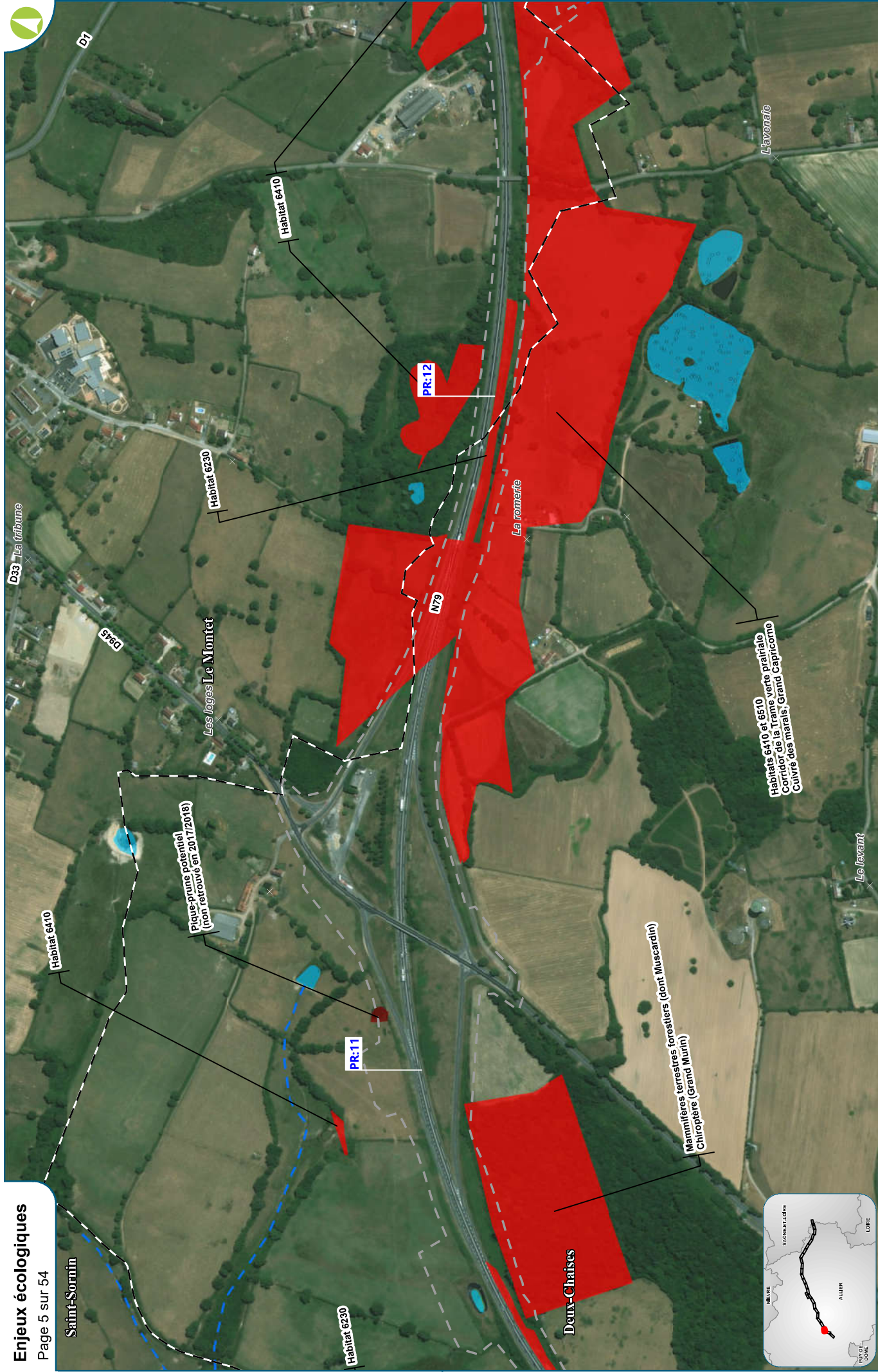
Flore patrimoniale non protégée :

-  *Crassula tillaea*
-  *Fragaria viridis*
-  *Limosella aquatica*
-  *Zannichellia palustris*
-  *Carex vulpina*
-  *Ornithopus compressus*
-  *Potamogeton trichoides*
-  *Spiranthes spiralis*
-  *Trifolium scabrum*
-  *Silene gallica*









Saint-Sornin

D1

D33 La tribune

D45

Les leges Le Montet

Habitat 6410

Habitat 6230

N79

La romerie

Lavanafé

Le lavant

Habitat 6410

Plaque-prune potentiel
(non retrouvé en 2017/2018)

PR-11

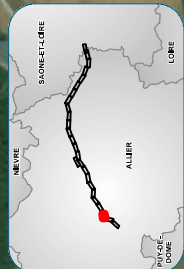
Habitat 6230

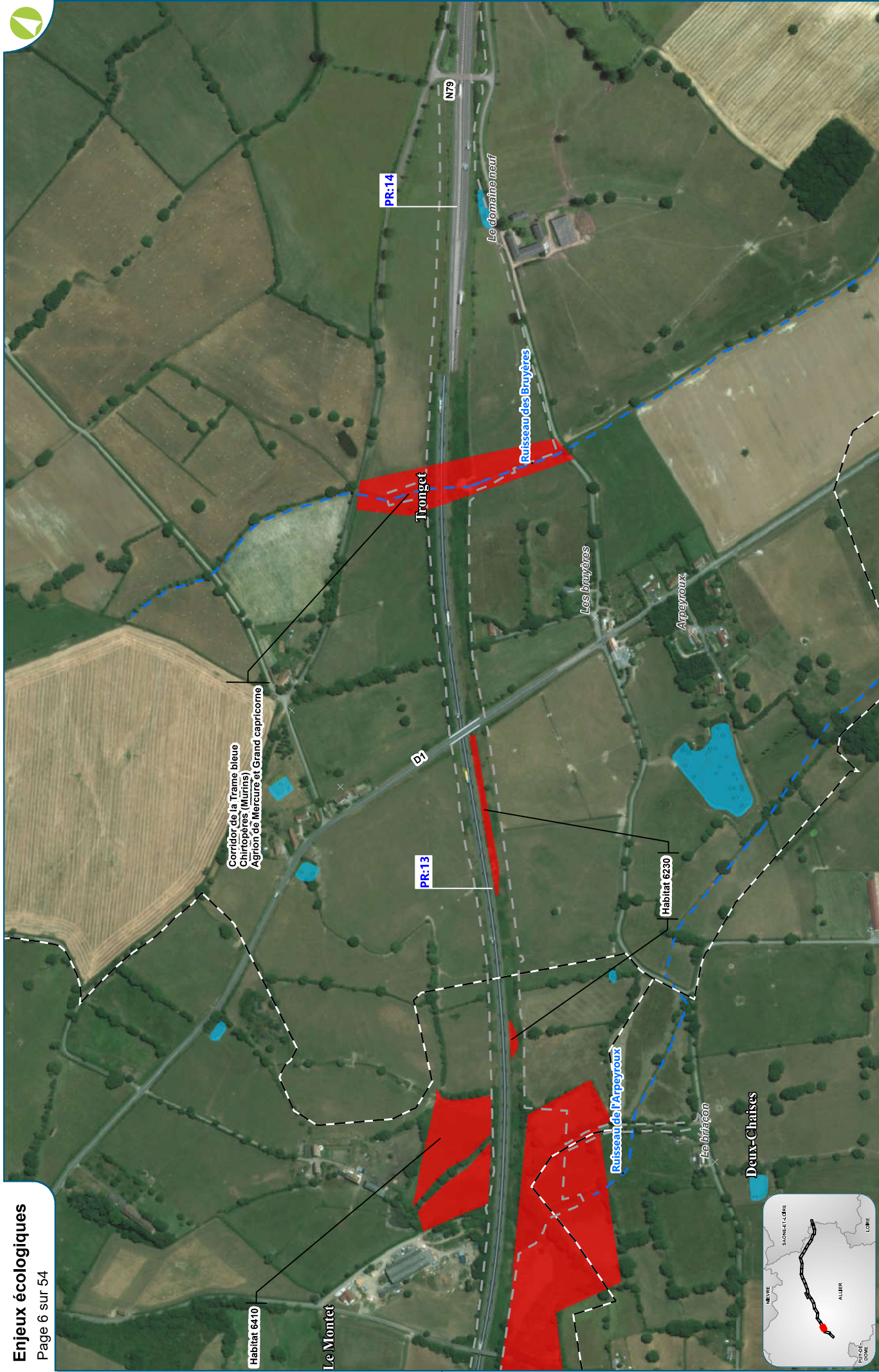
PR-12

Deux-Chaises

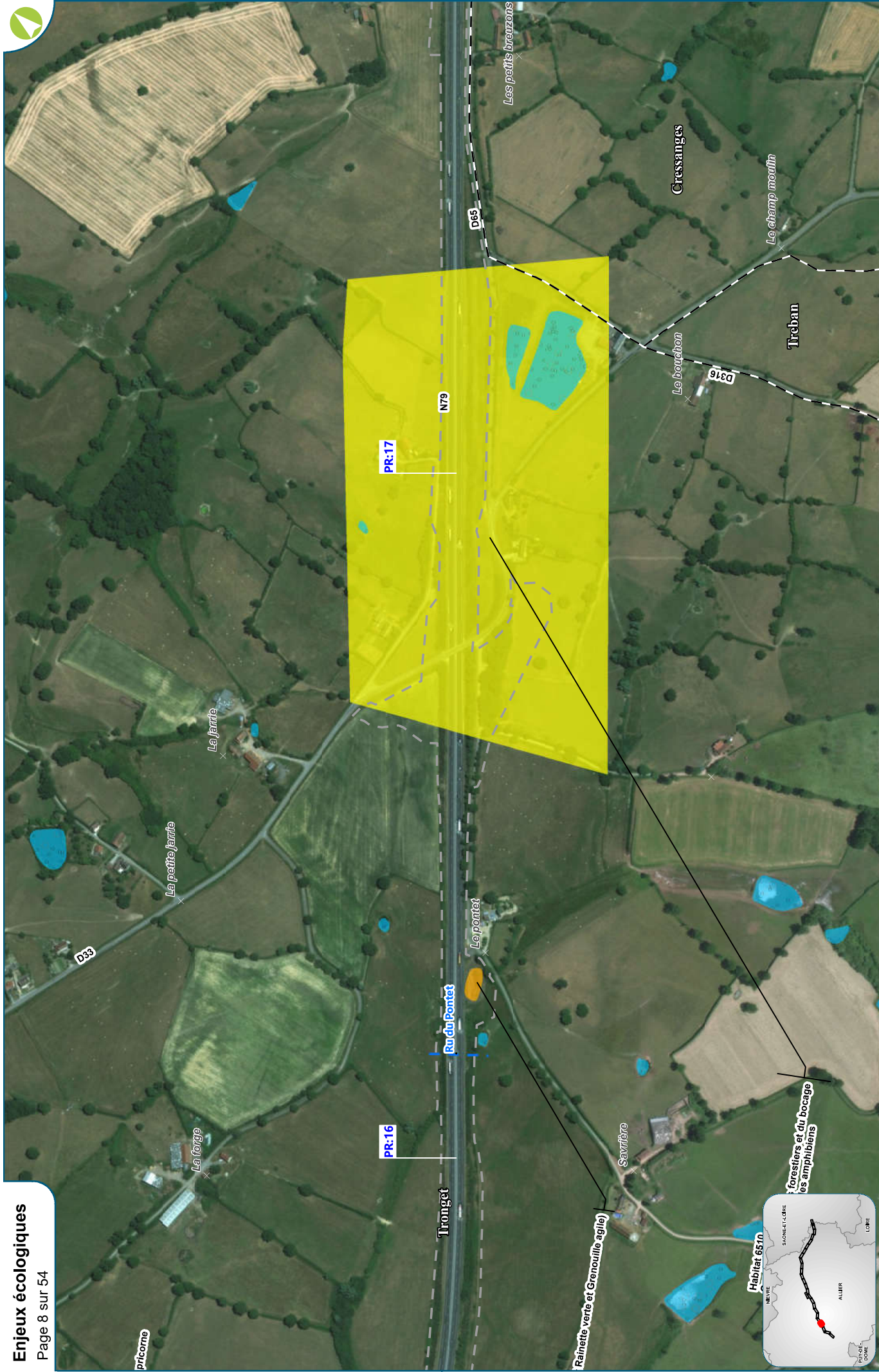
Mammifères terrestres forestiers (dont Muscardin)
Chiroptère (Grand Murin)

Habitats 6410 et 6510
Corridor de la Trame verte prafiale
Couvré des marais, Grand Capricorne

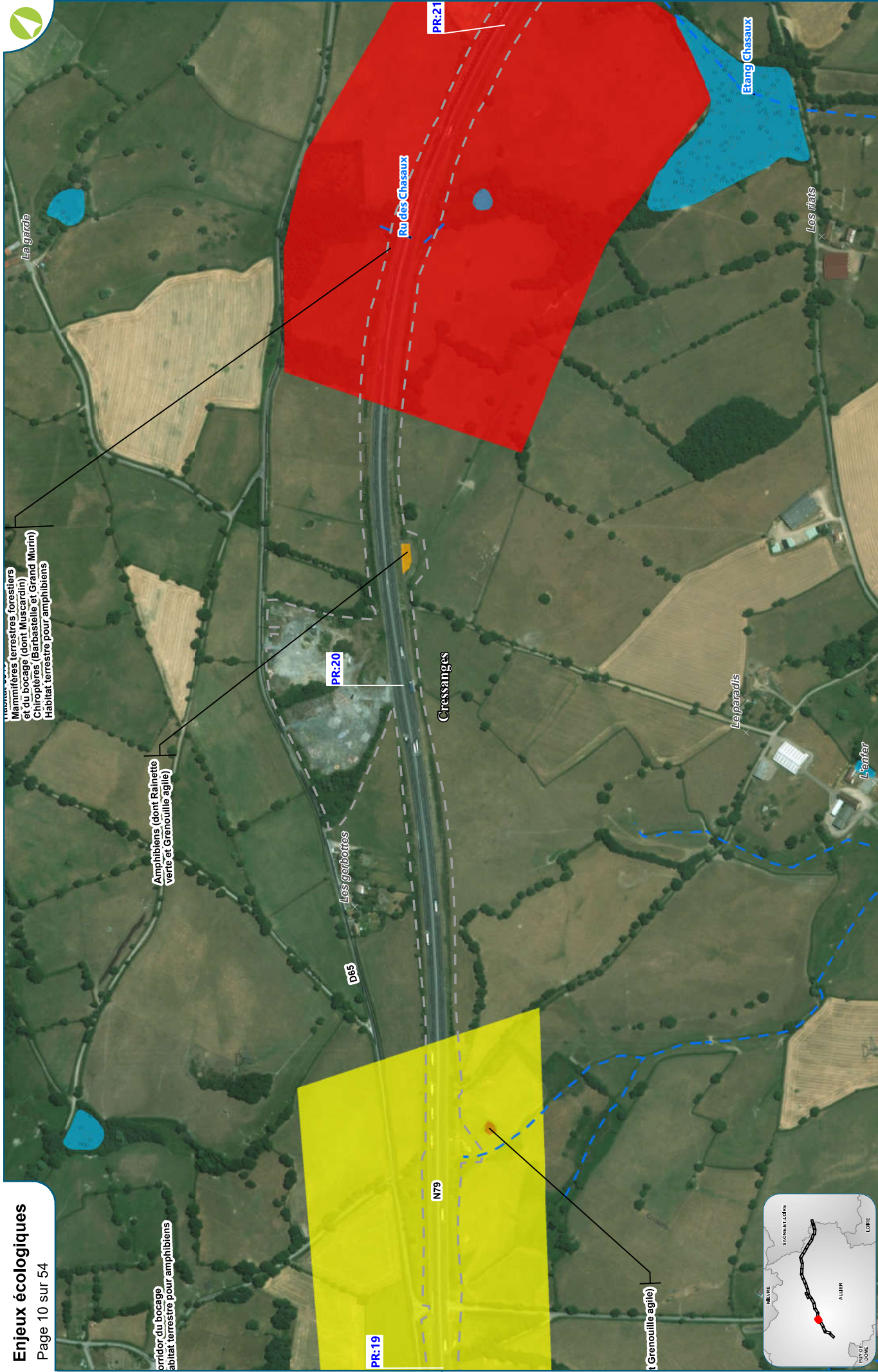


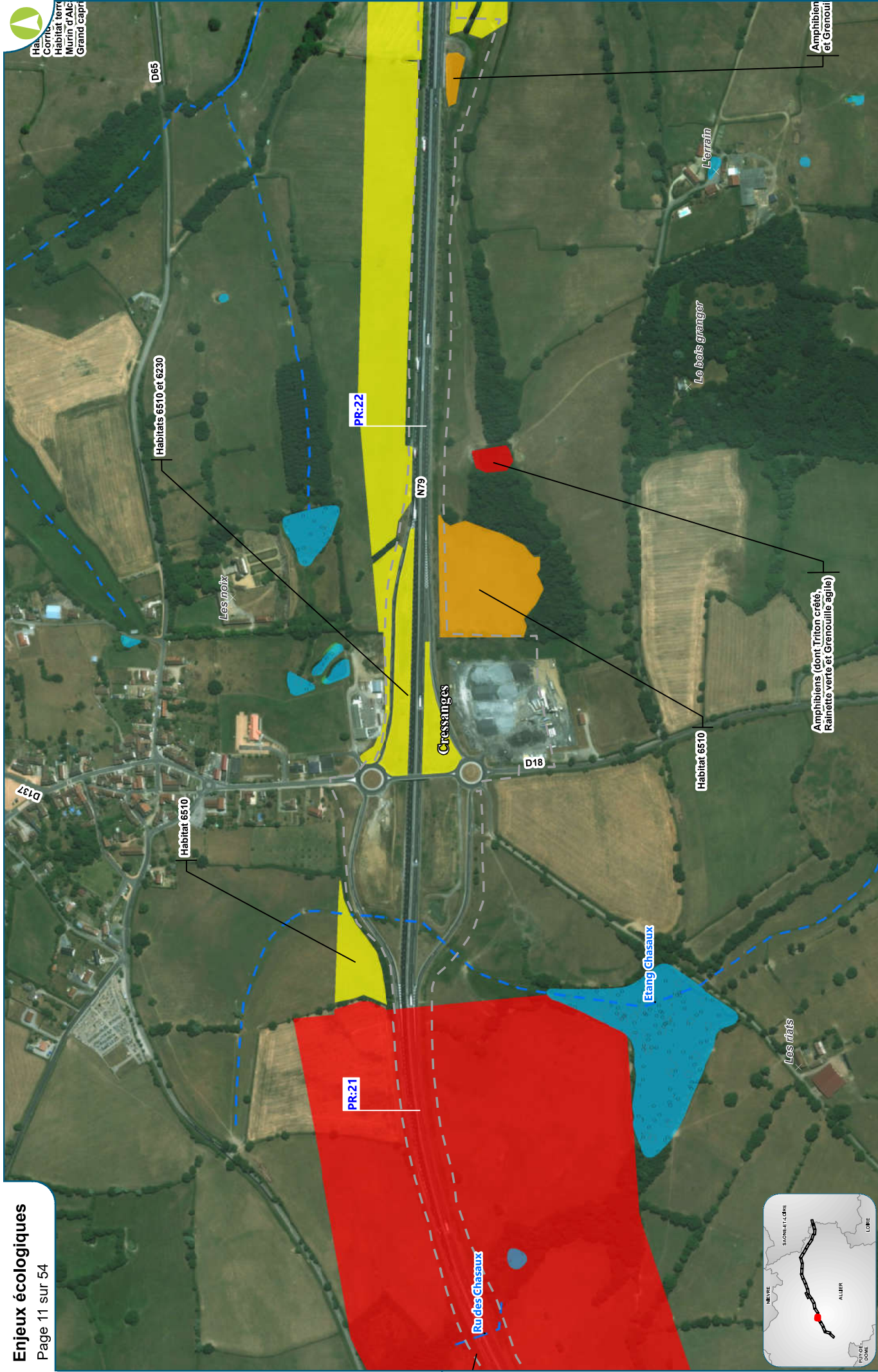


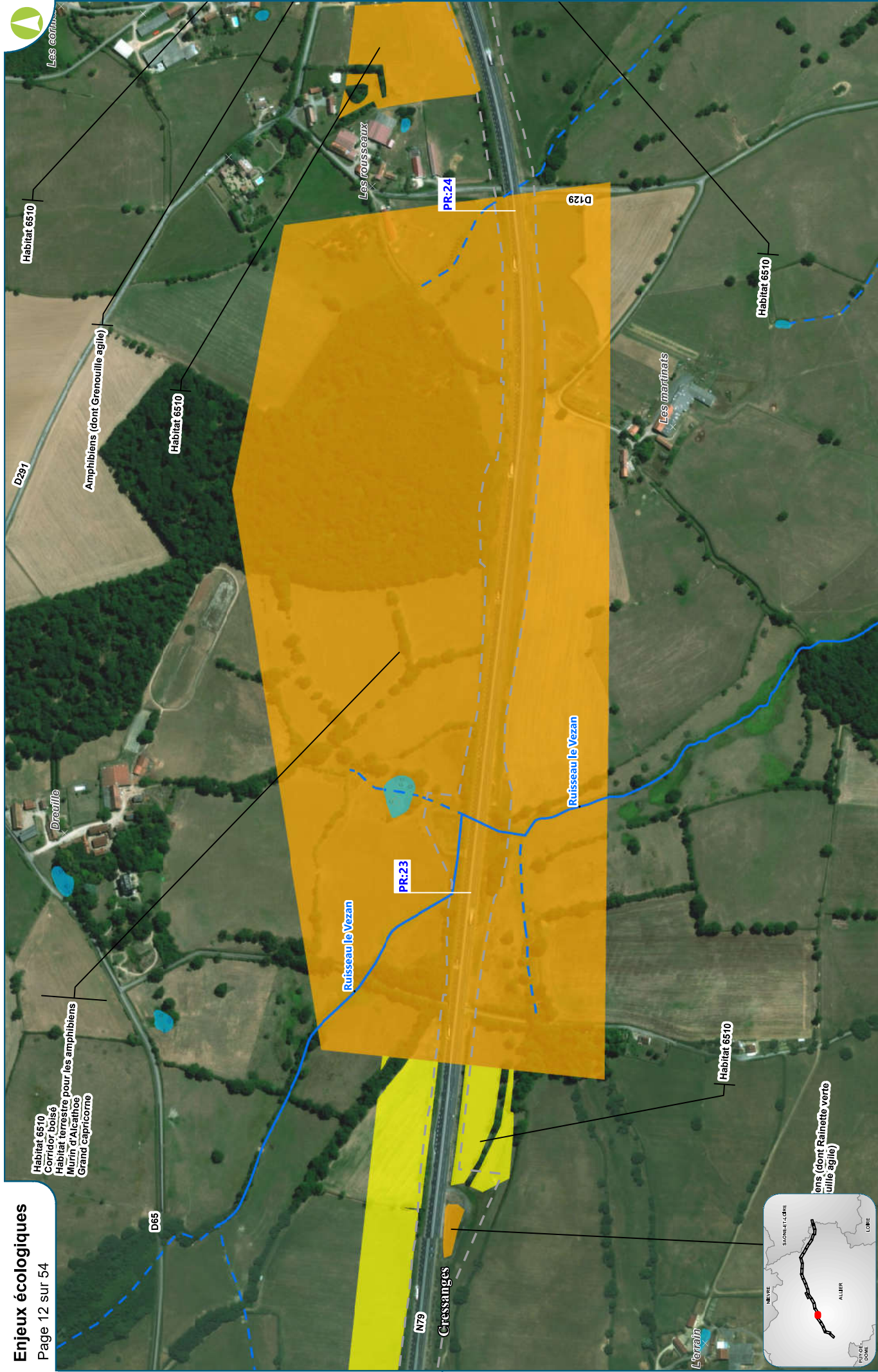


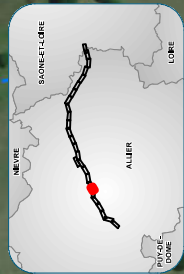
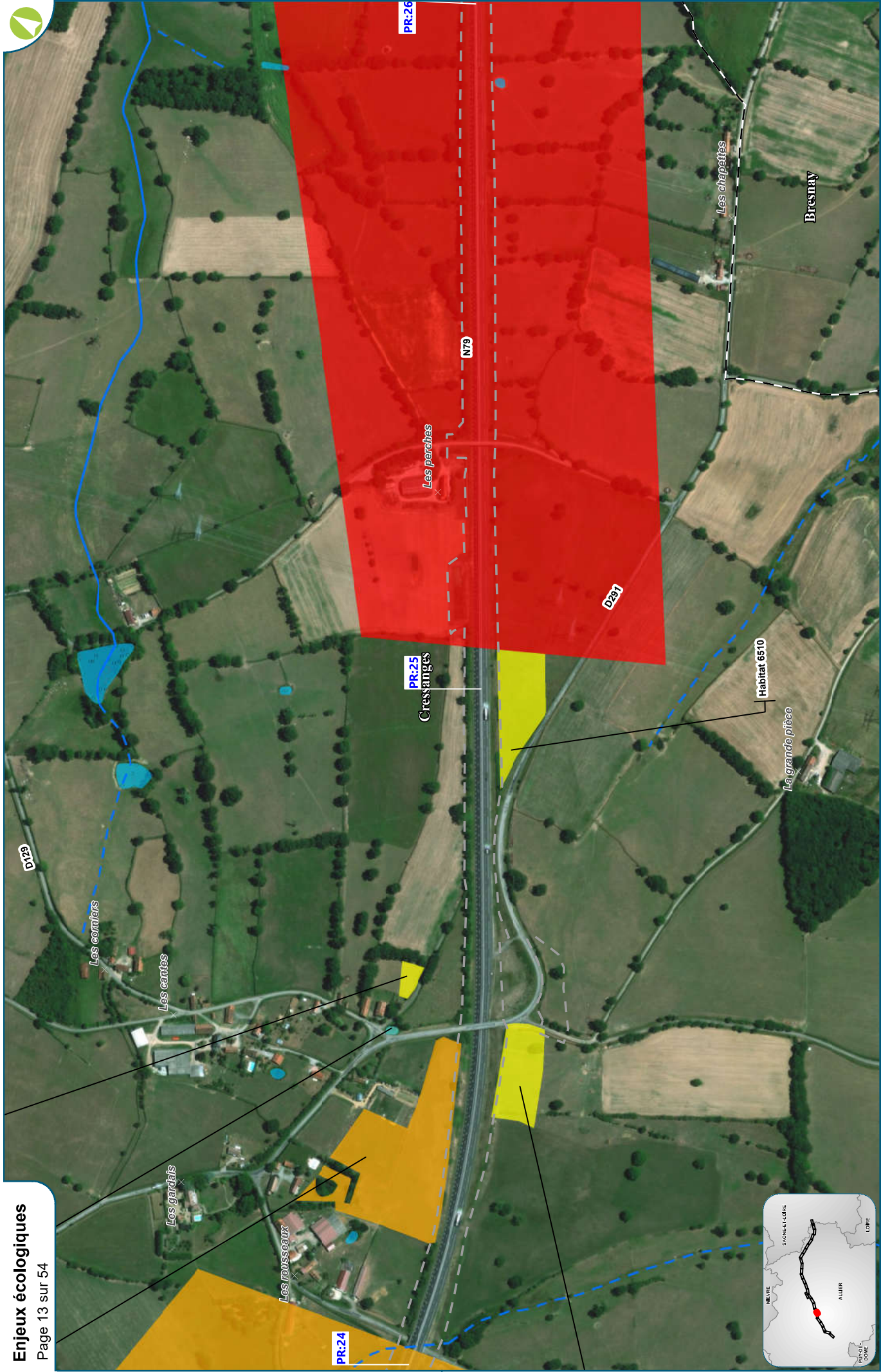


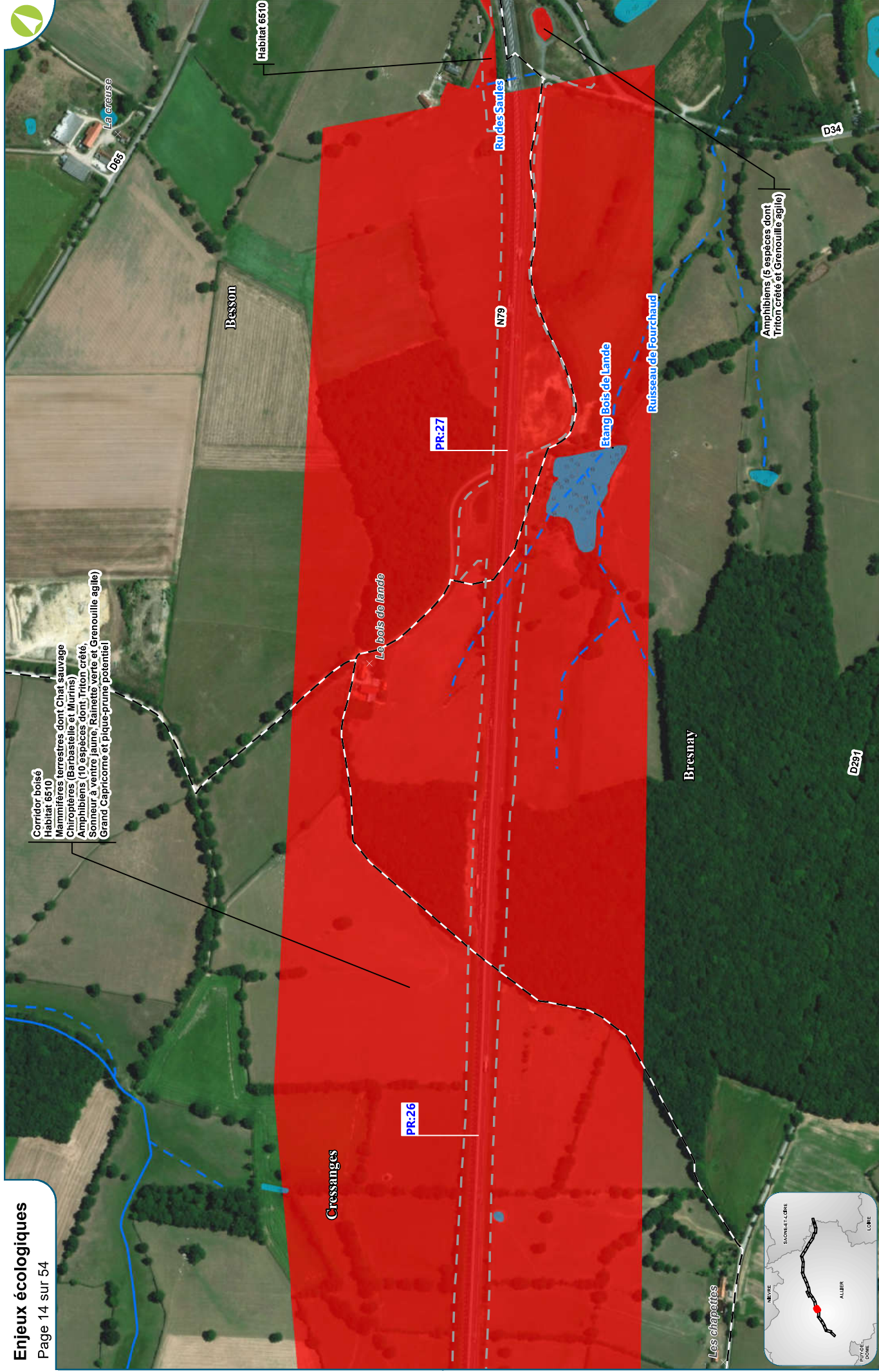








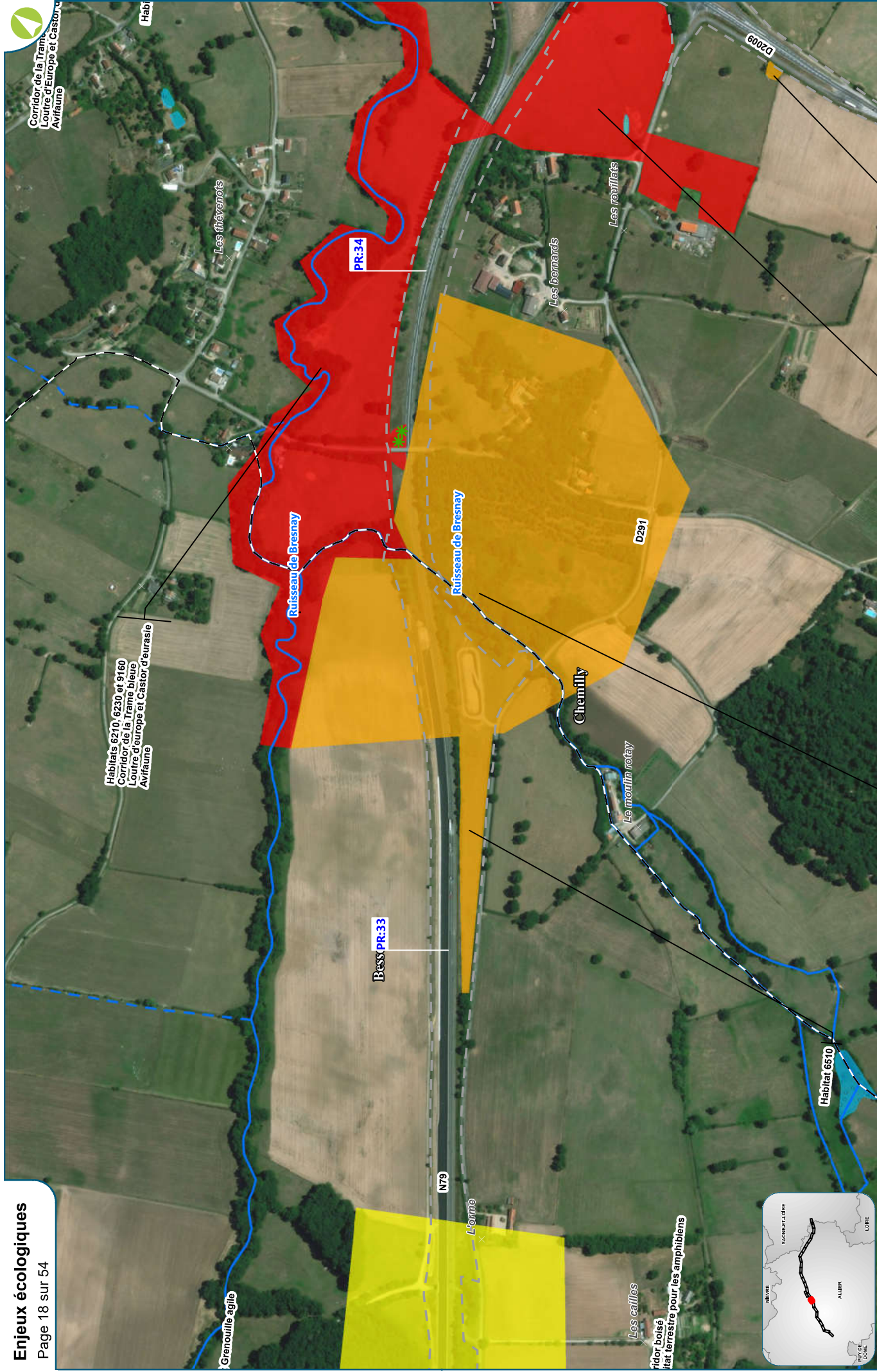


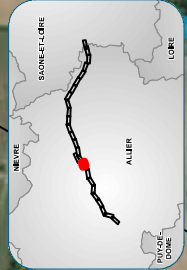
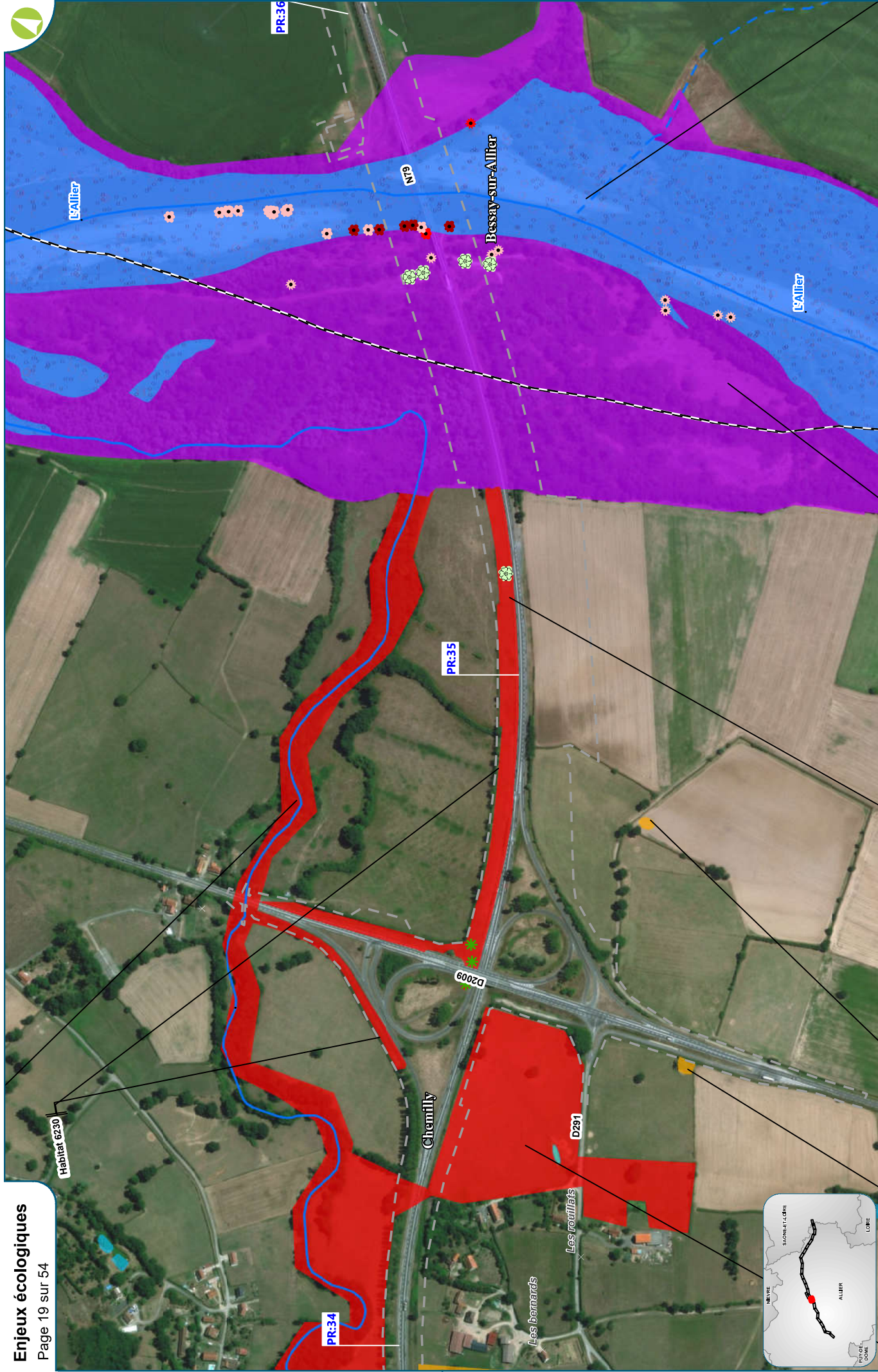


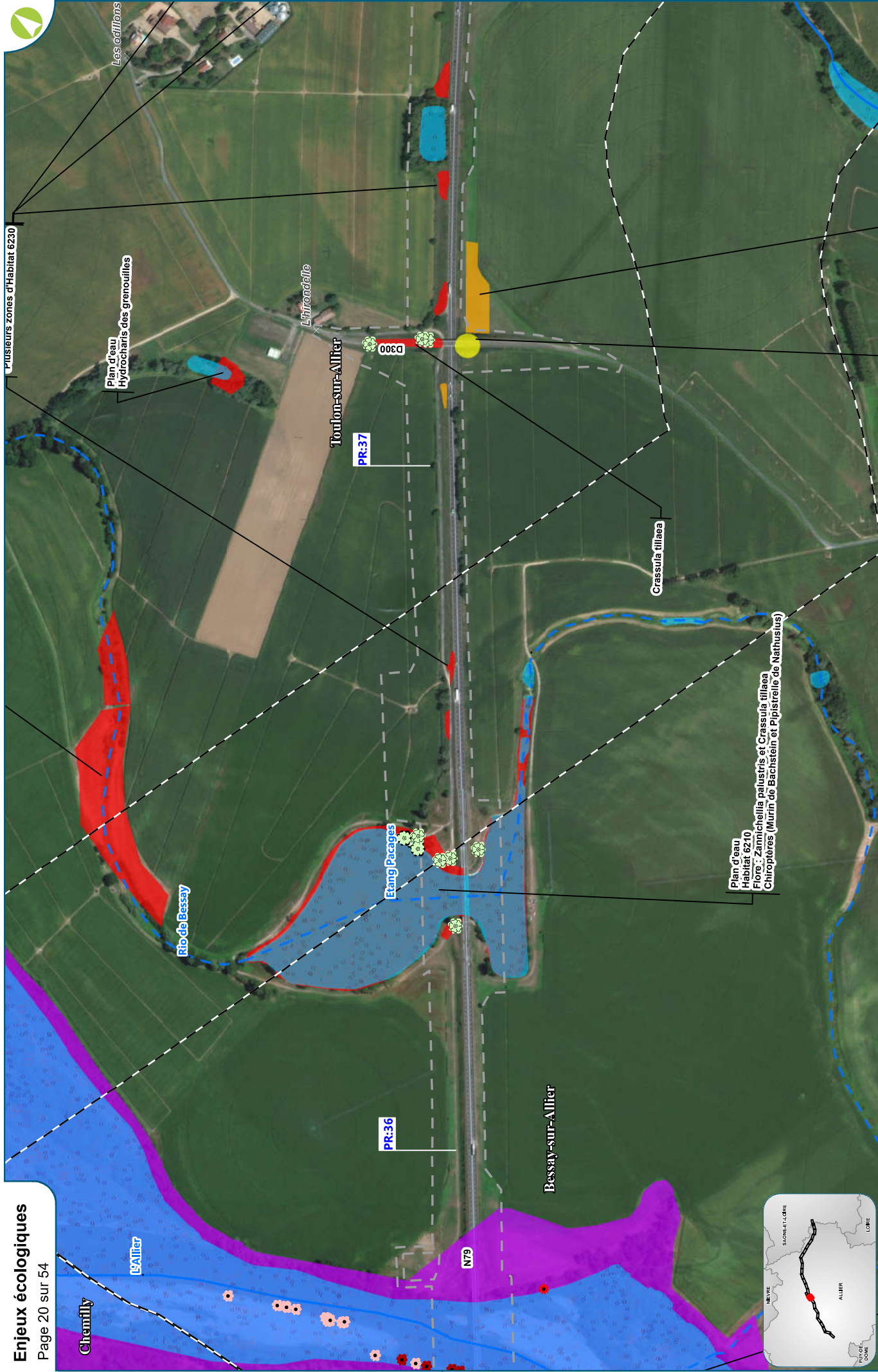










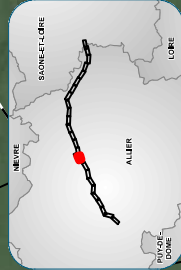
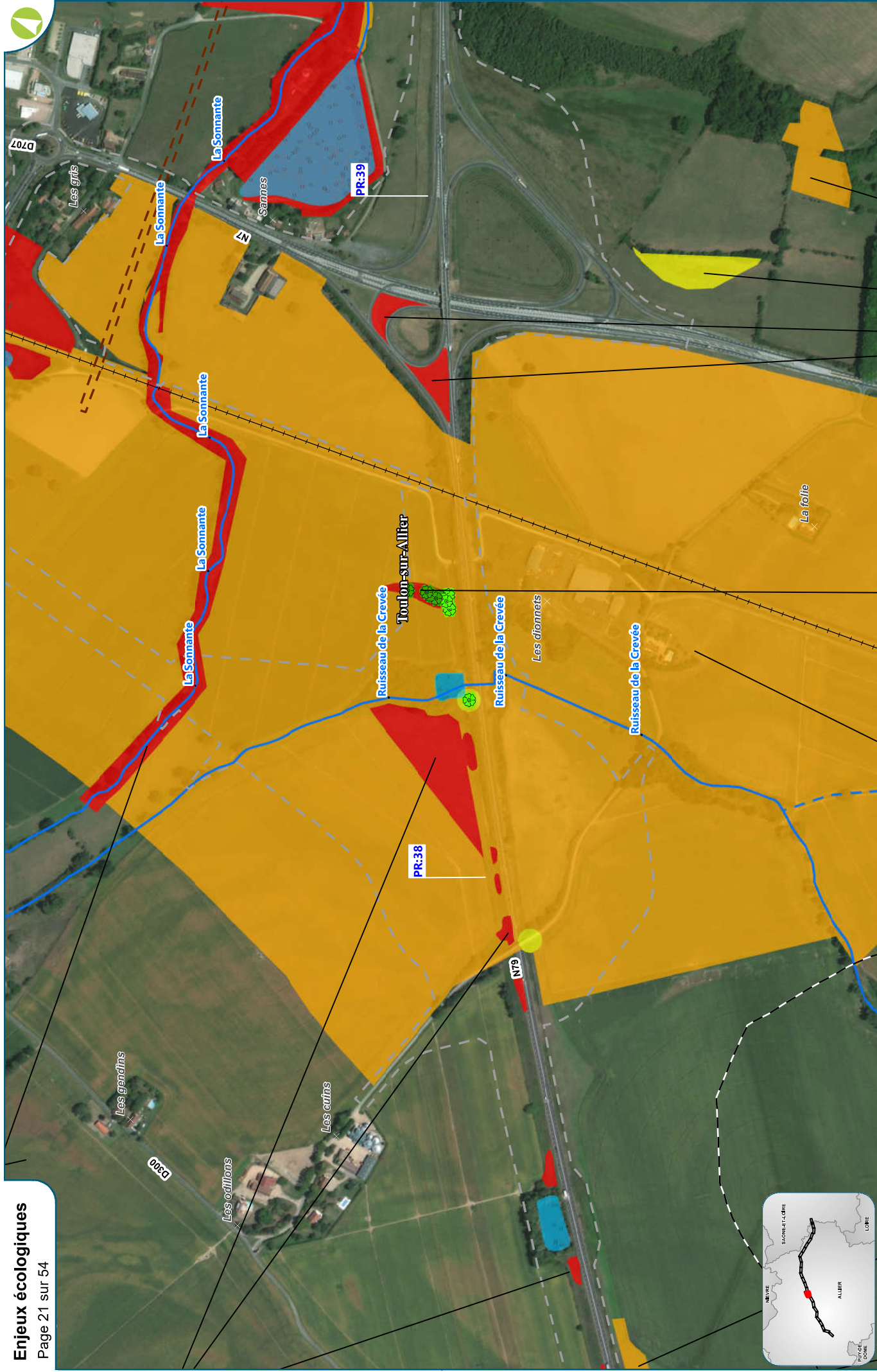


MISE À 2X2 VOIES DE LA RN 79 (RCEA) ENTRE SAZERET ET DIGOIN

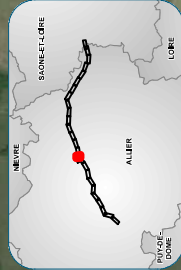
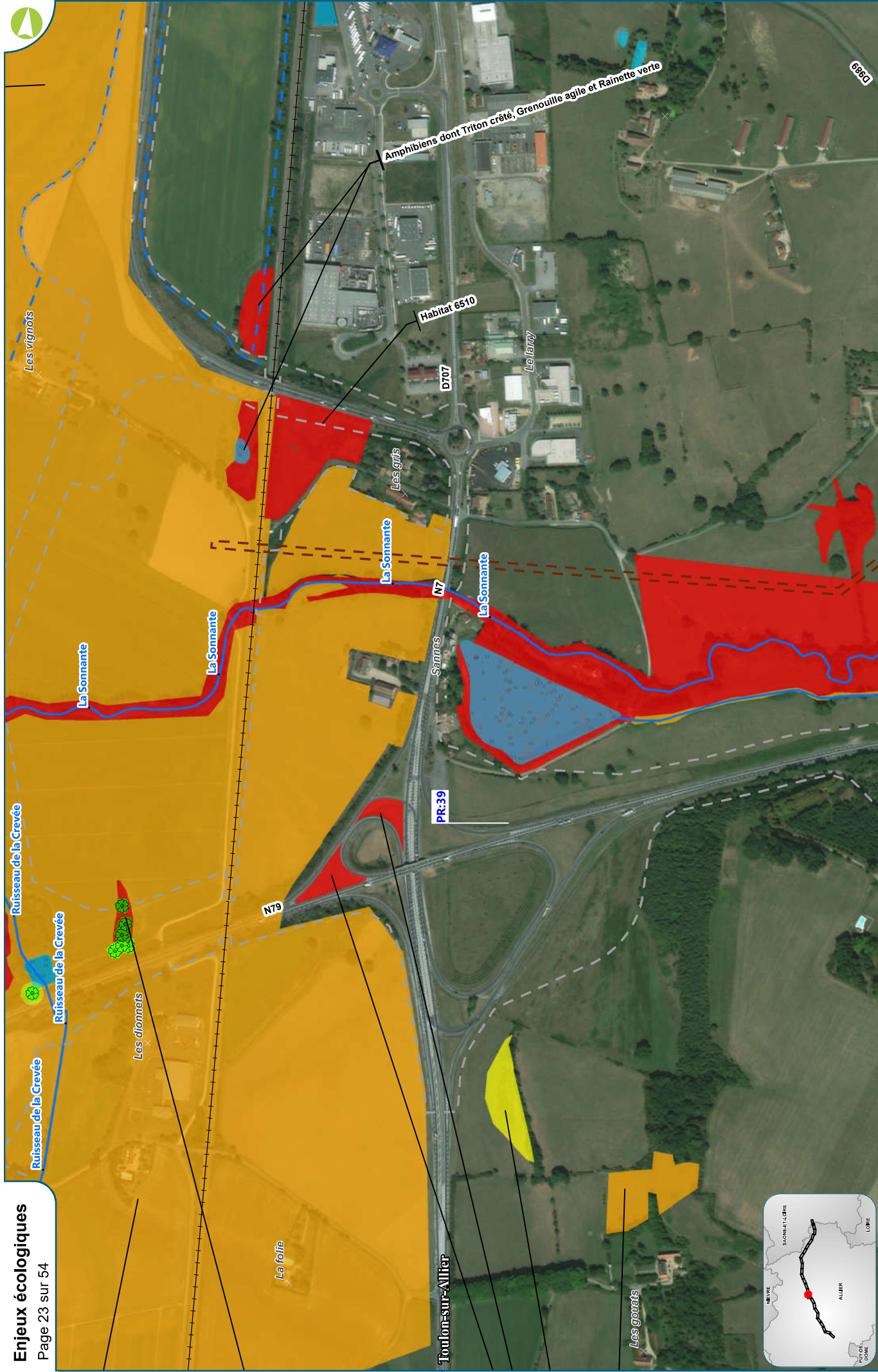


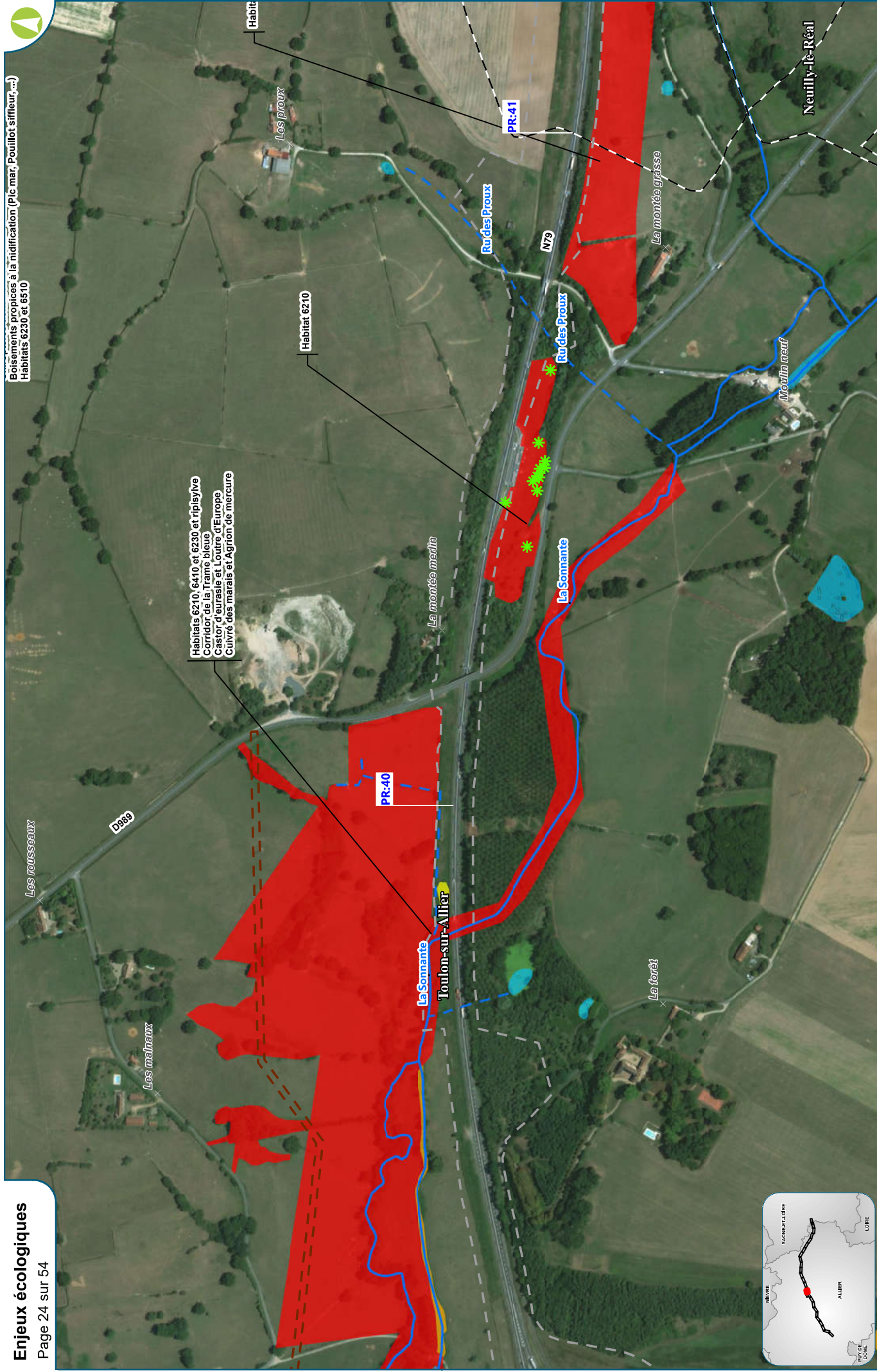
Echelle 1/5 000ème - Format A3

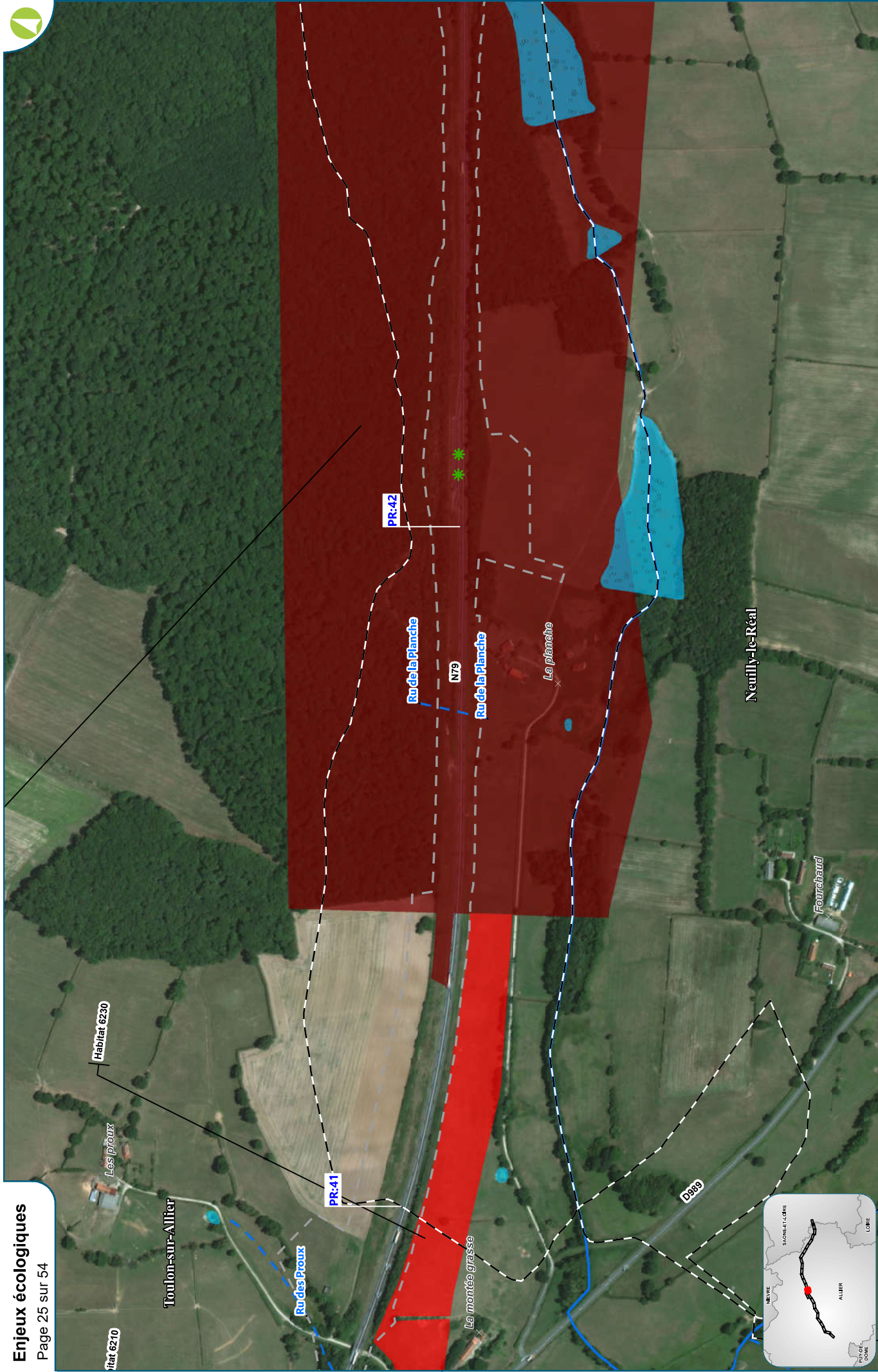
Date : 10/07/2020
Réalisation : Egis environnement
Fond de plan : World Imagery ESRI

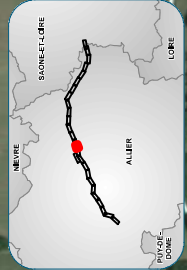
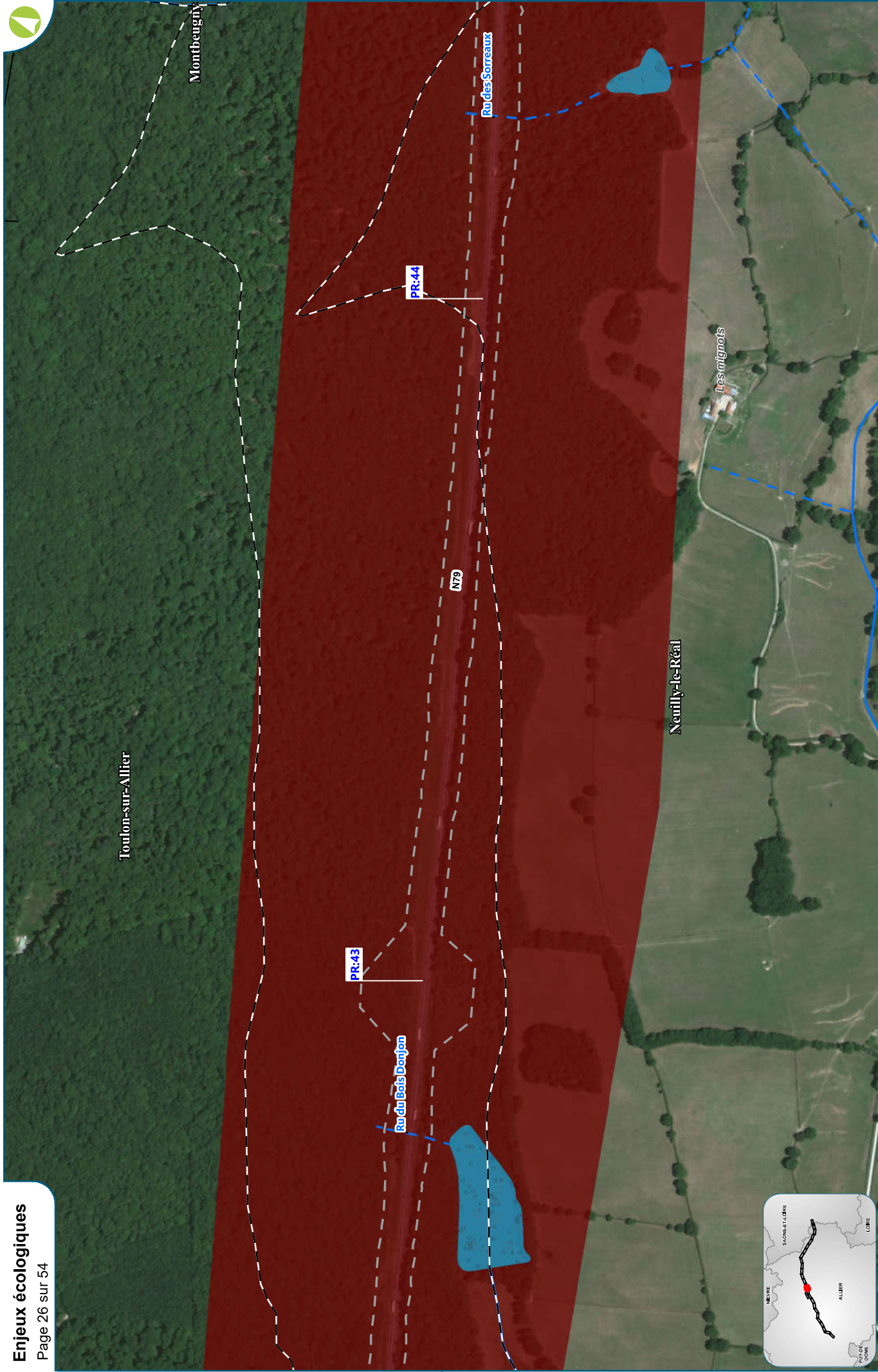












Toulon-sur-Allier

