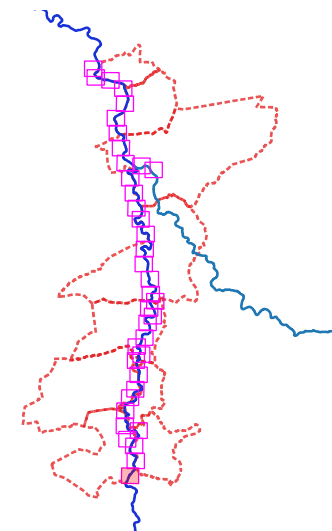


Définition et cartographie de l'aléa inondation de la rivière Cher et de son affluent l'Aumance sur le territoire du Val-de-Cher




Aléa

Crue T = 100 ans





Carte n°1



Légende :

-  Ouvrages hydrauliques
-  Limite précision MNT
-  Surfaces en eau

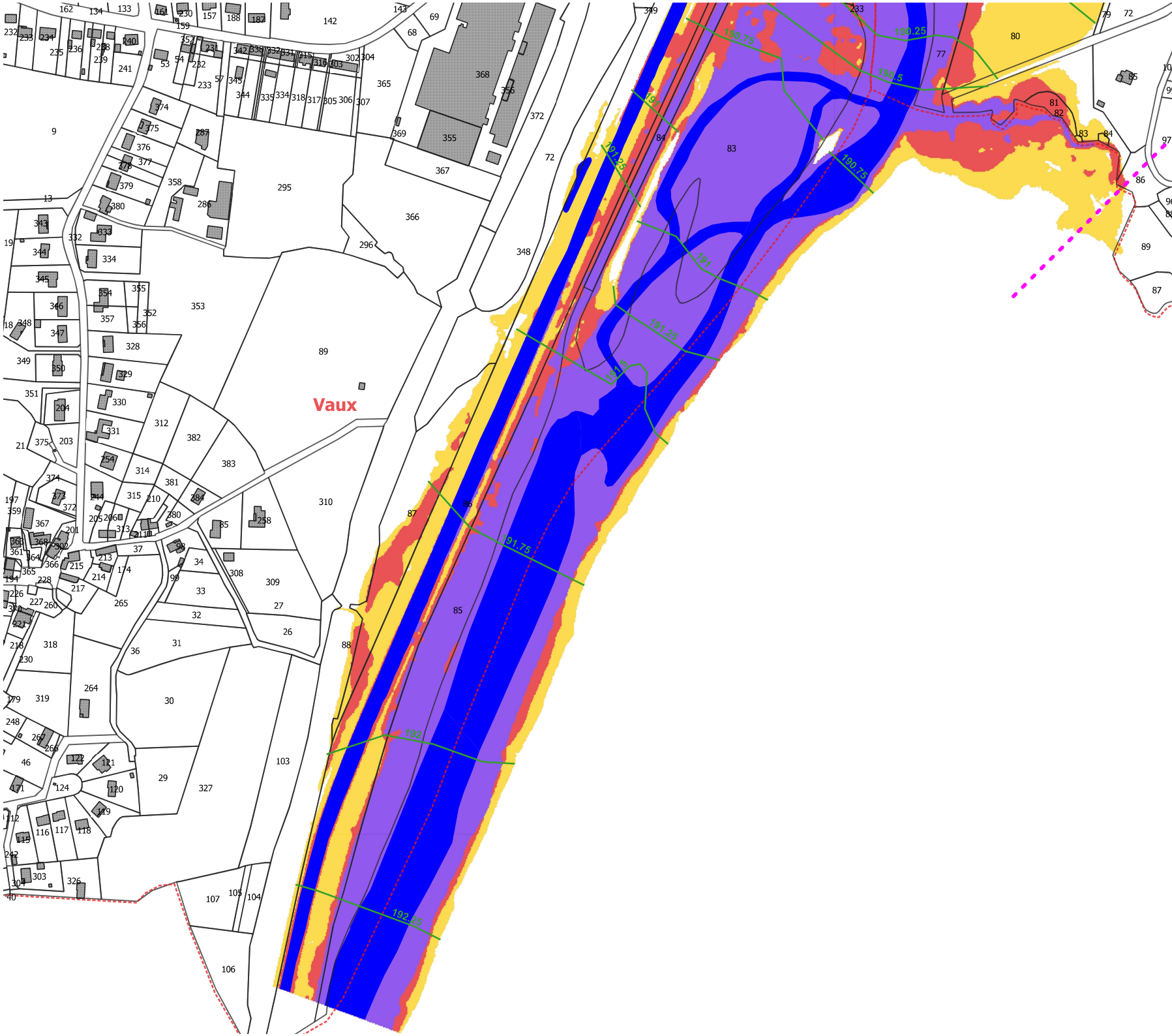
Aléa

-  Modéré
-  Fort
-  Très fort
-  Isocotes

0 50 100 150 200 m



1:5 000

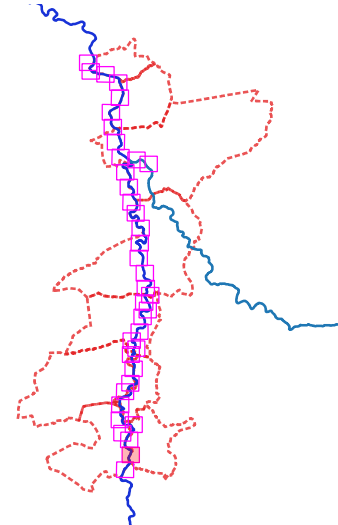


**Définition et cartographie de
l'aléa inondation de la rivière
Cher et de son affluent l'Aumance
sur le territoire du Val-de-Cher**




Aléa

Crue T = 100 ans

Carte n°2



Légende :

-  Ouvrages hydrauliques
-  Limite précision MNT
-  Surfaces en eau

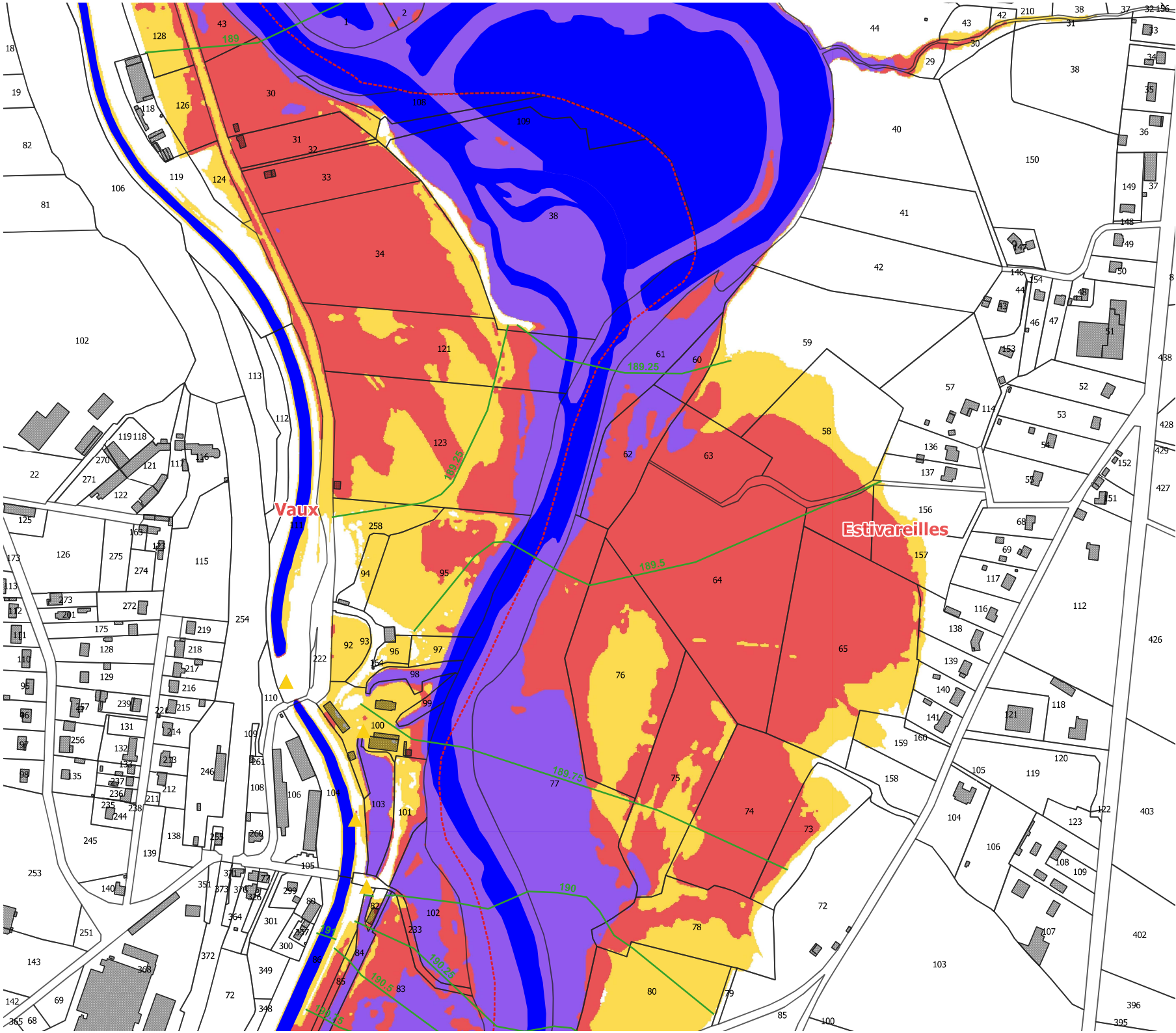
Aléa

-  Modéré
-  Fort
-  Très fort
-  Isocotes

0 50 100 150 200 m



1:5 000

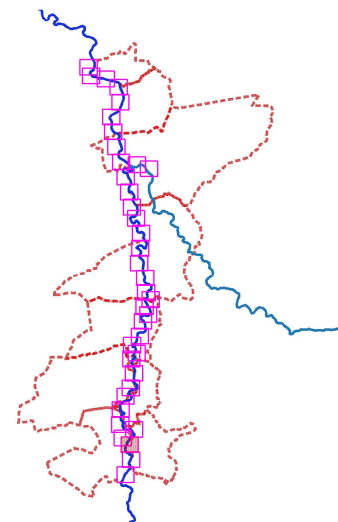


**Définition et cartographie de
l'aléa inondation de la rivière
Cher et de son affluent l'Aumance
sur le territoire du Val-de-Cher**




Aléa

Crue T = 100 ans


Carte n°3



Légende :

-  Ouvrages hydrauliques
-  Limite précision MNT
-  Surfaces en eau

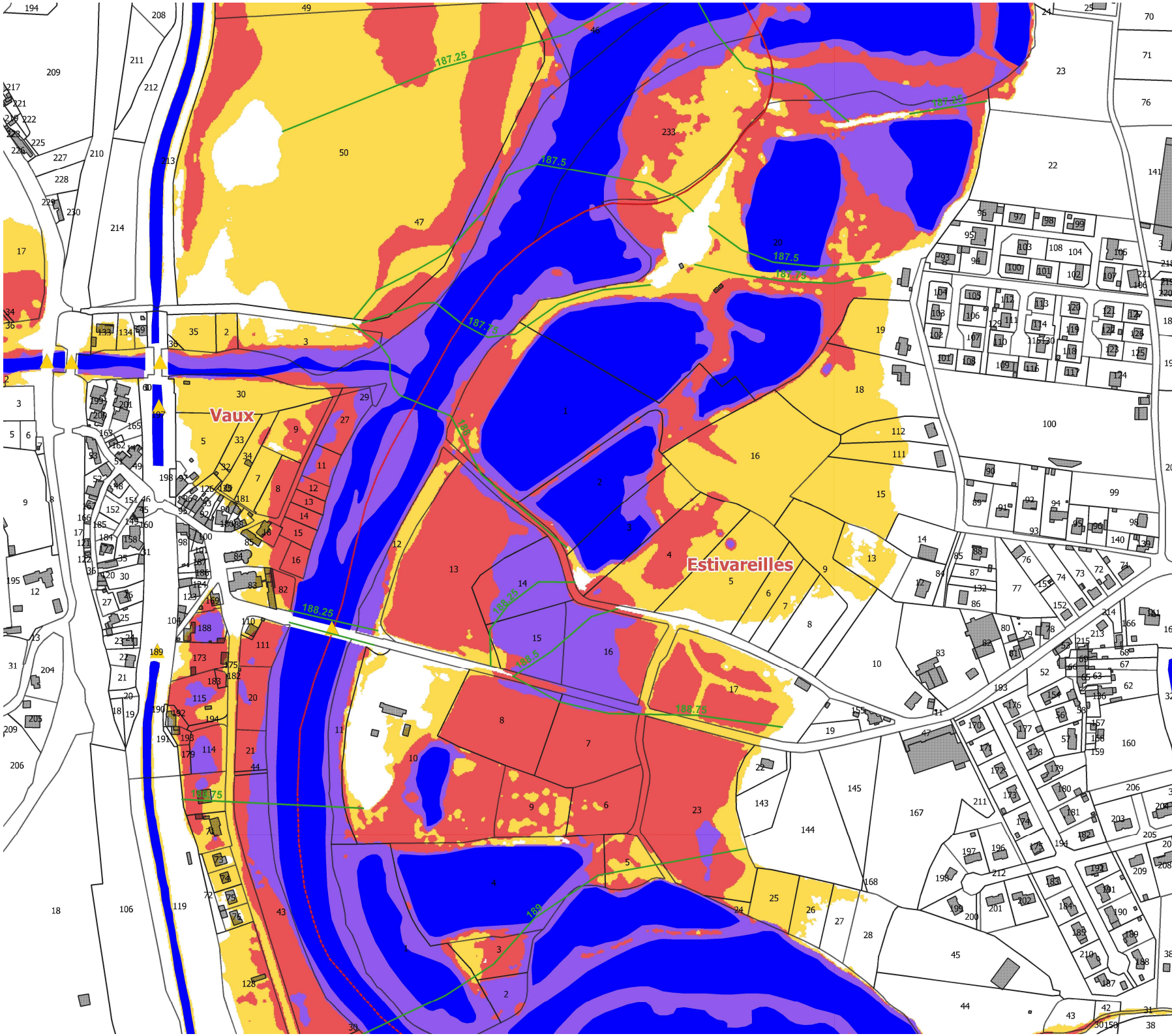
Aléa

-  Modéré
-  Fort
-  Très fort
-  Isocotes

0 50 100 150 200 m



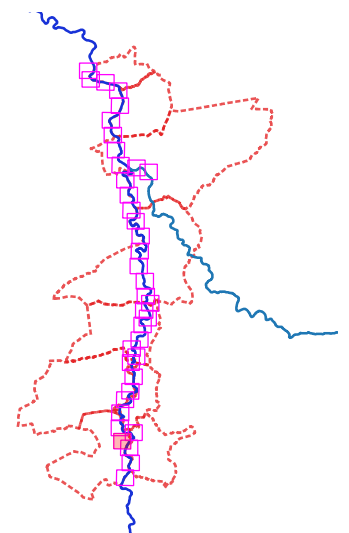
1:5 000





Définition et cartographie de l'aléa inondation de la rivière Cher et de son affluent l'Aumance sur le territoire du Val-de-Cher

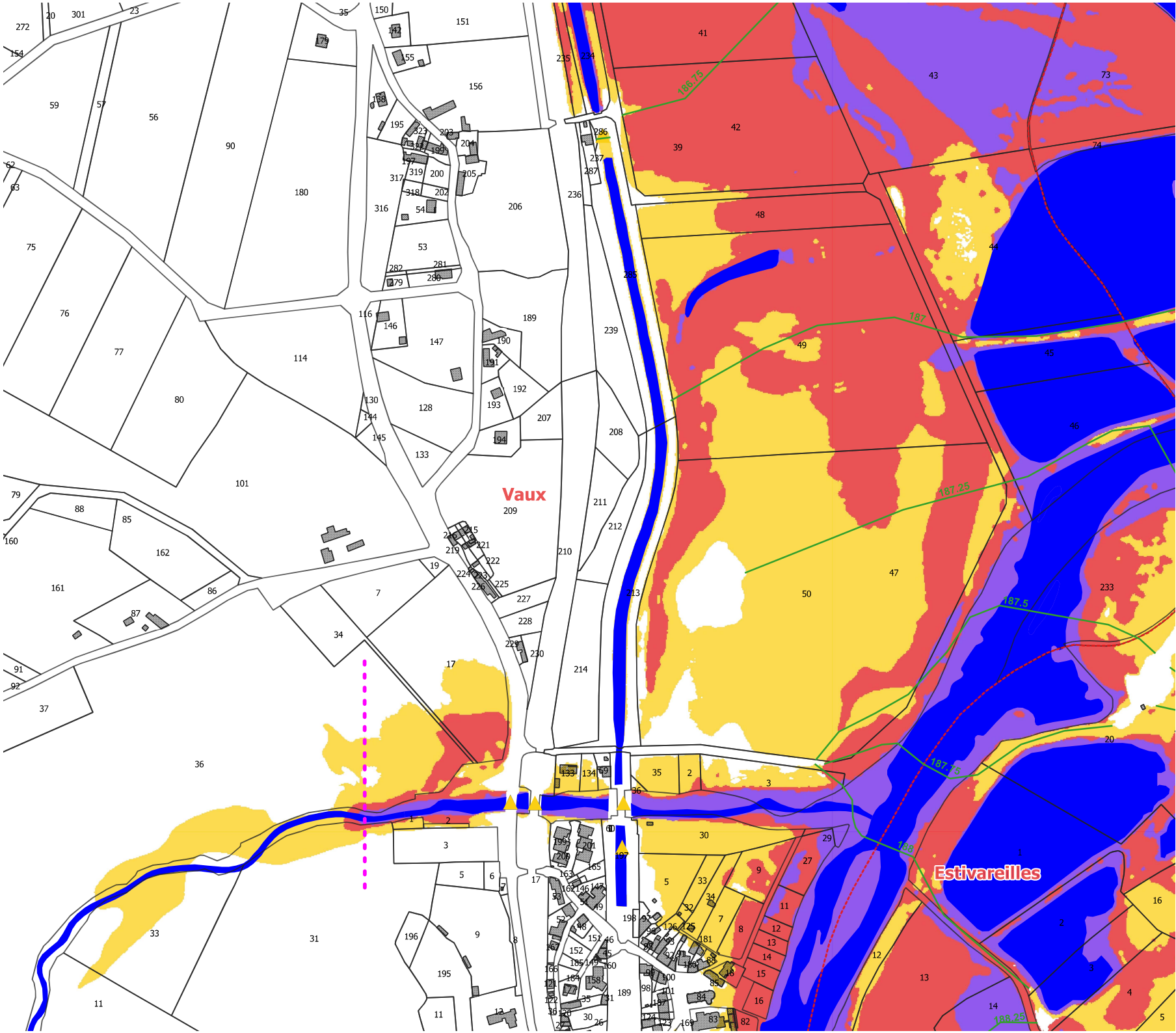
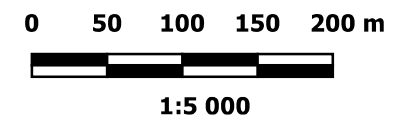
Aléa
Crue T = 100 ans

Carte n°4



Légende :

-  Ouvrages hydrauliques
 -  Limite précision MNT
 -  Surfaces en eau
- Aléa
-  Modéré
 -  Fort
 -  Très fort
 -  Isocotes

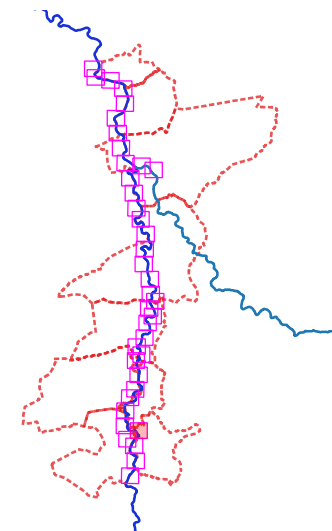


**Définition et cartographie de
l'aléa inondation de la rivière
Cher et de son affluent l'Aumance
sur le territoire du Val-de-Cher**






Aléa

Crue T = 100 ans

Carte n°5



Légende :

-  Ouvrages hydrauliques
-  Limite précision MNT
-  Surfaces en eau
- Aléa
 -  Modéré
 -  Fort
 -  Très fort
 -  Isocotes

0 50 100 150 200 m



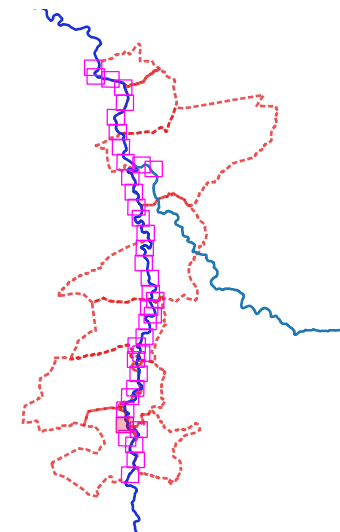
1:5 000

**Définition et cartographie de
l'aléa inondation de la rivière
Cher et de son affluent l'Aumance
sur le territoire du Val-de-Cher**




Aléa

Crue T = 100 ans





Carte n°6



Légende :

-  Ouvrages hydrauliques
-  Limite précision MNT
-  Surfaces en eau

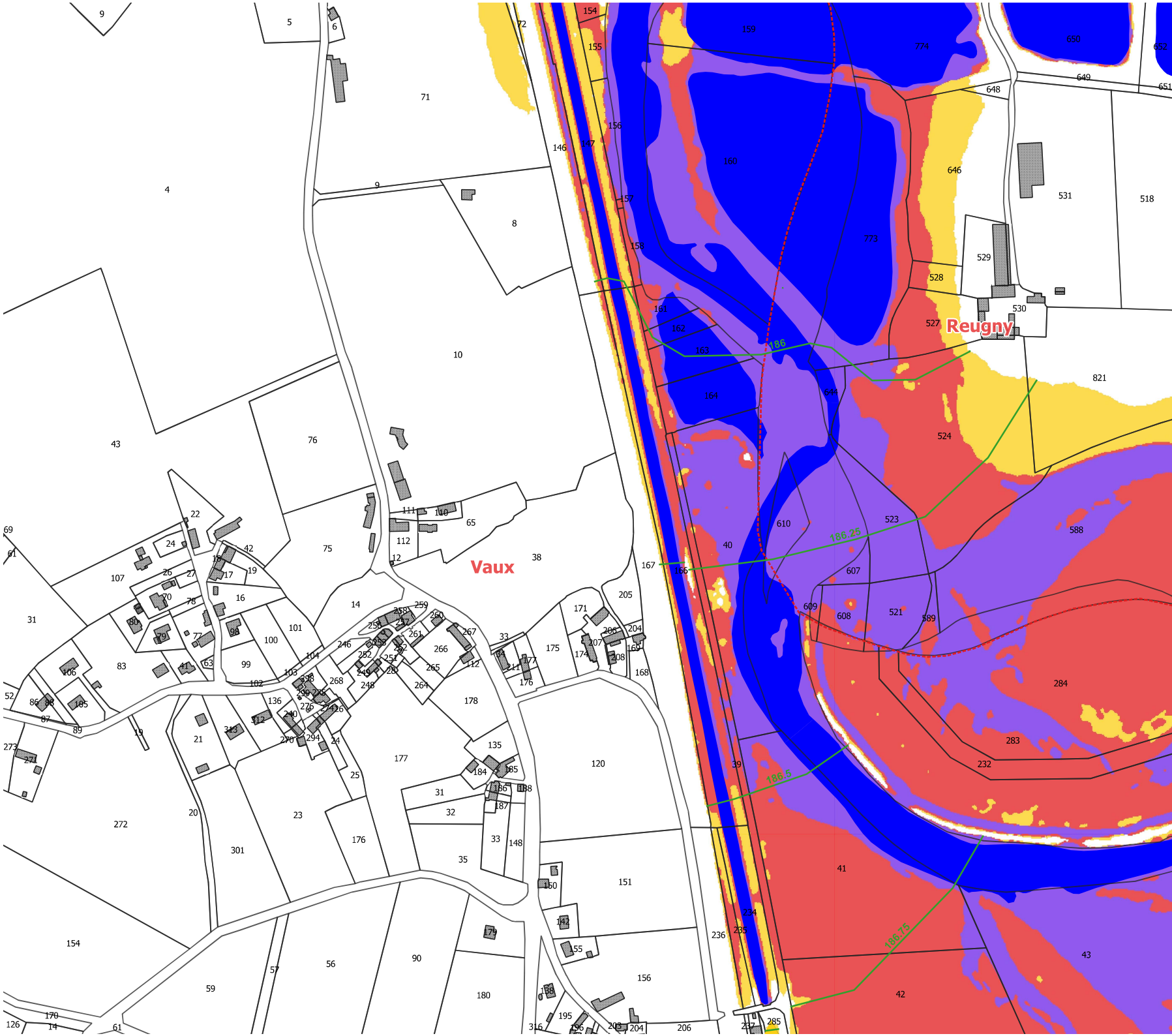
Aléa

-  Modéré
-  Fort
-  Très fort
-  Isocotes

0 50 100 150 200 m



1:5 000

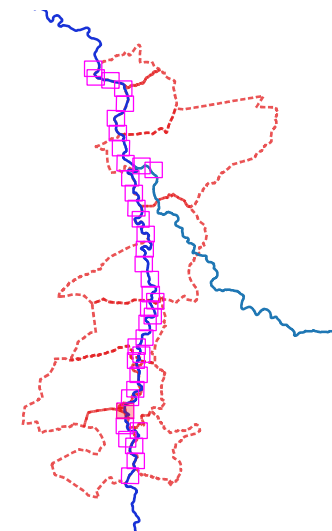


**Définition et cartographie de
l'aléa inondation de la rivière
Cher et de son affluent l'Aumance
sur le territoire du Val-de-Cher**




Aléa

Crue T = 100 ans





Carte n°7



Légende :

-  Ouvrages hydrauliques
-  Limite précision MNT
-  Surfaces en eau

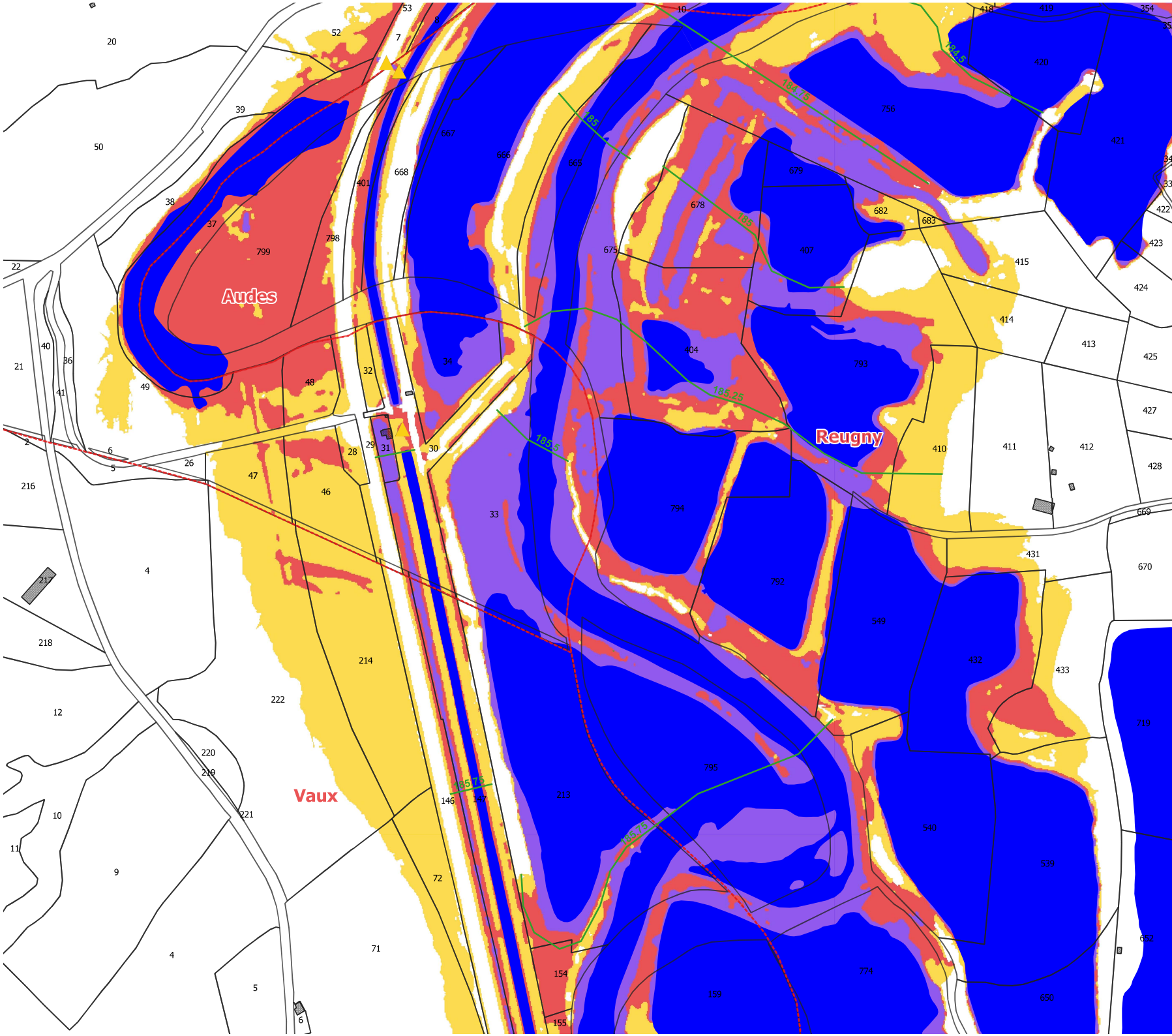
Aléa

-  Modéré
-  Fort
-  Très fort
-  Isocotes

0 50 100 150 200 m



1:5 000

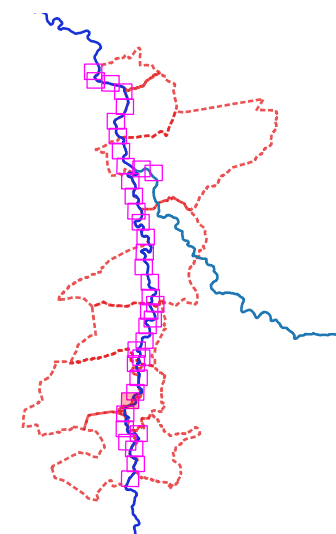


**Définition et cartographie de
l'aléa inondation de la rivière
Cher et de son affluent l'Aumance
sur le territoire du Val-de-Cher**




Aléa

Crue T = 100 ans





Carte n°8



Légende :

-  Ouvrages hydrauliques
-  Limite précision MNT
-  Surfaces en eau

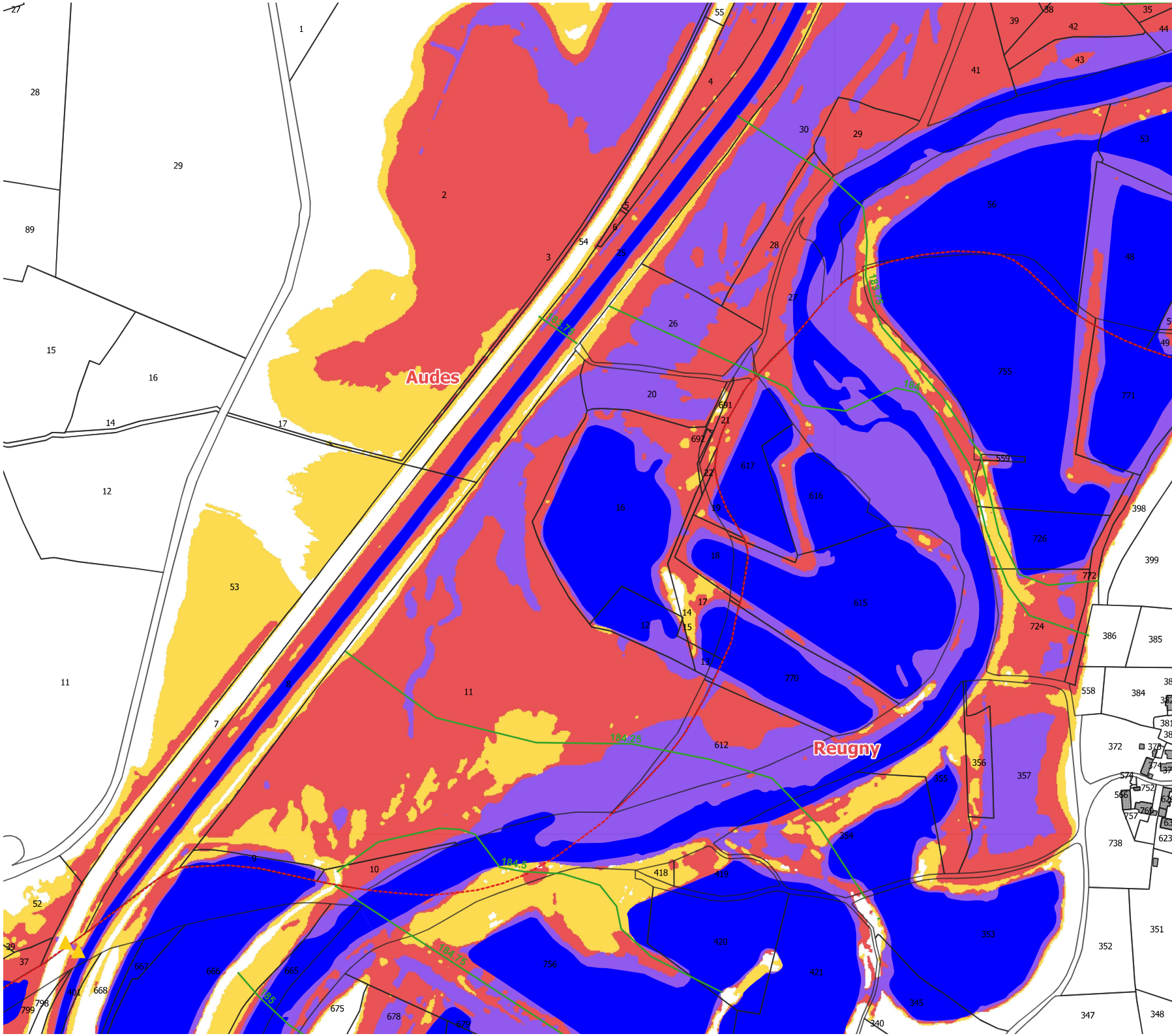
Aléa

-  Modéré
-  Fort
-  Très fort
-  Isocotes

0 50 100 150 200 m



1:5 000

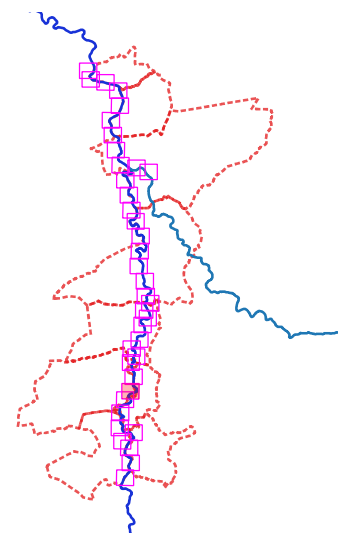


**Définition et cartographie de
l'aléa inondation de la rivière
Cher et de son affluent l'Aumance
sur le territoire du Val-de-Cher**








Aléa

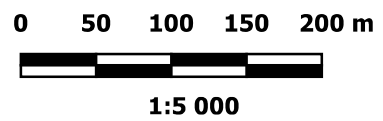
Crue T = 100 ans

Carte n°9



Légende :

-  Ouvrages hydrauliques
-  Limite précision MNT
-  Surfaces en eau
- Aléa**
-  Modéré
-  Fort
-  Très fort
-  Isocotes

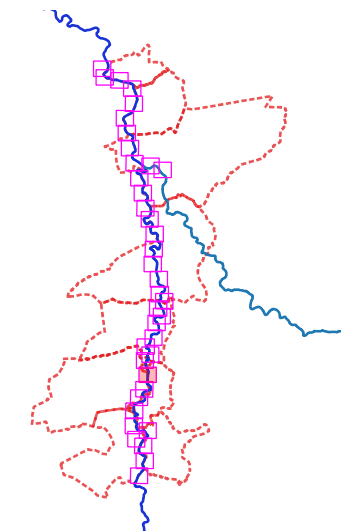


**Définition et cartographie de
l'aléa inondation de la rivière
Cher et de son affluent l'Aumance
sur le territoire du Val-de-Cher**




Aléa

Crue T = 100 ans

Carte n°10



Légende :

-  Ouvrages hydrauliques
-  Limite précision MNT
-  Surfaces en eau

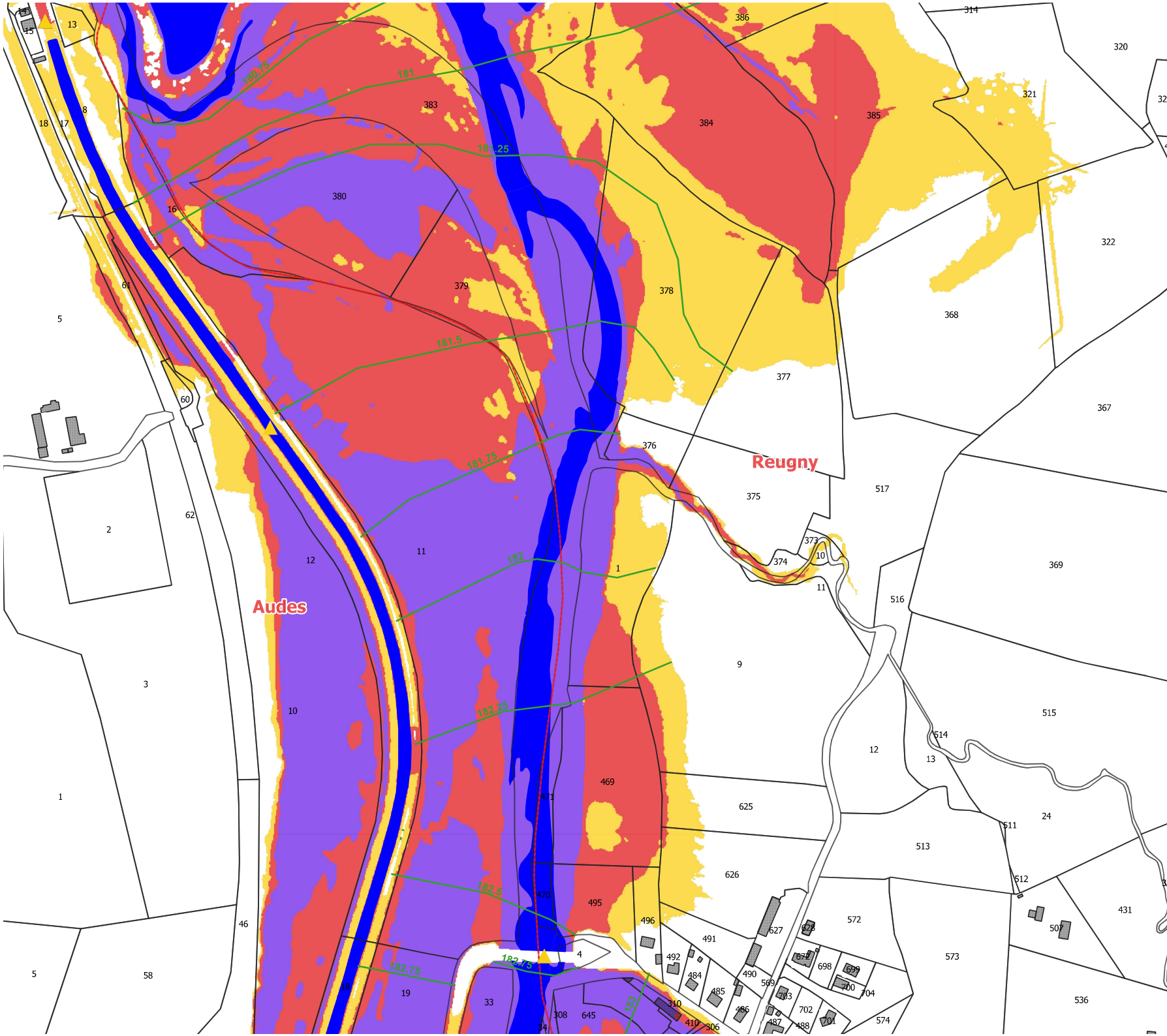
Aléa

-  Modéré
-  Fort
-  Très fort
-  Isocotes

0 50 100 150 200 m



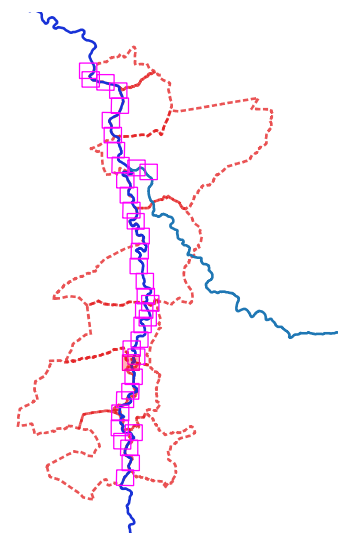
1:5 000




Définition et cartographie de l'aléa inondation de la rivière Cher et de son affluent l'Aumance sur le territoire du Val-de-Cher

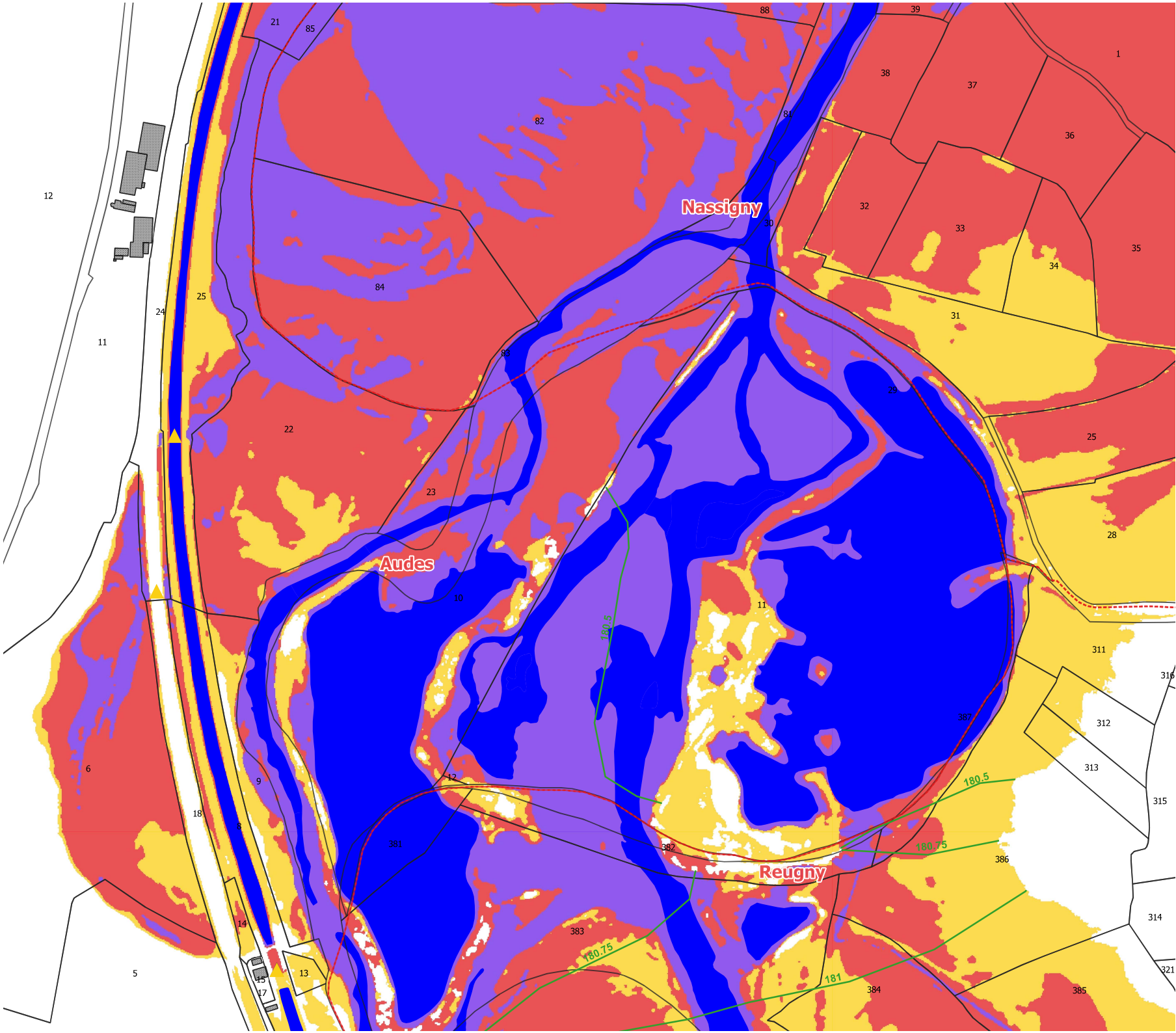
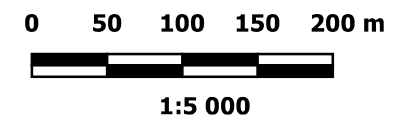
Aléa
Crue T = 100 ans

Carte n°11



Légende :

-  Ouvrages hydrauliques
-  Limite précision MNT
-  Surfaces en eau
- Aléa**
-  Modéré
-  Fort
-  Très fort
-  Isocotes

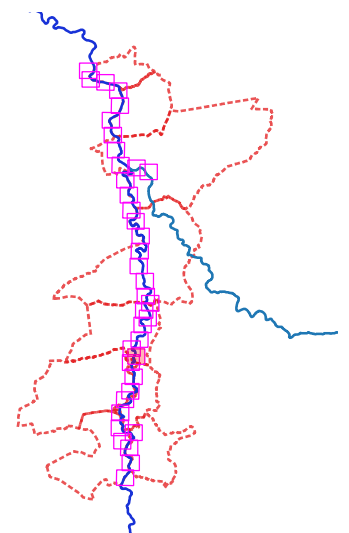


**Définition et cartographie de
l'aléa inondation de la rivière
Cher et de son affluent l'Aumance
sur le territoire du Val-de-Cher**



Aléa

Crue T = 100 ans

Carte n°12



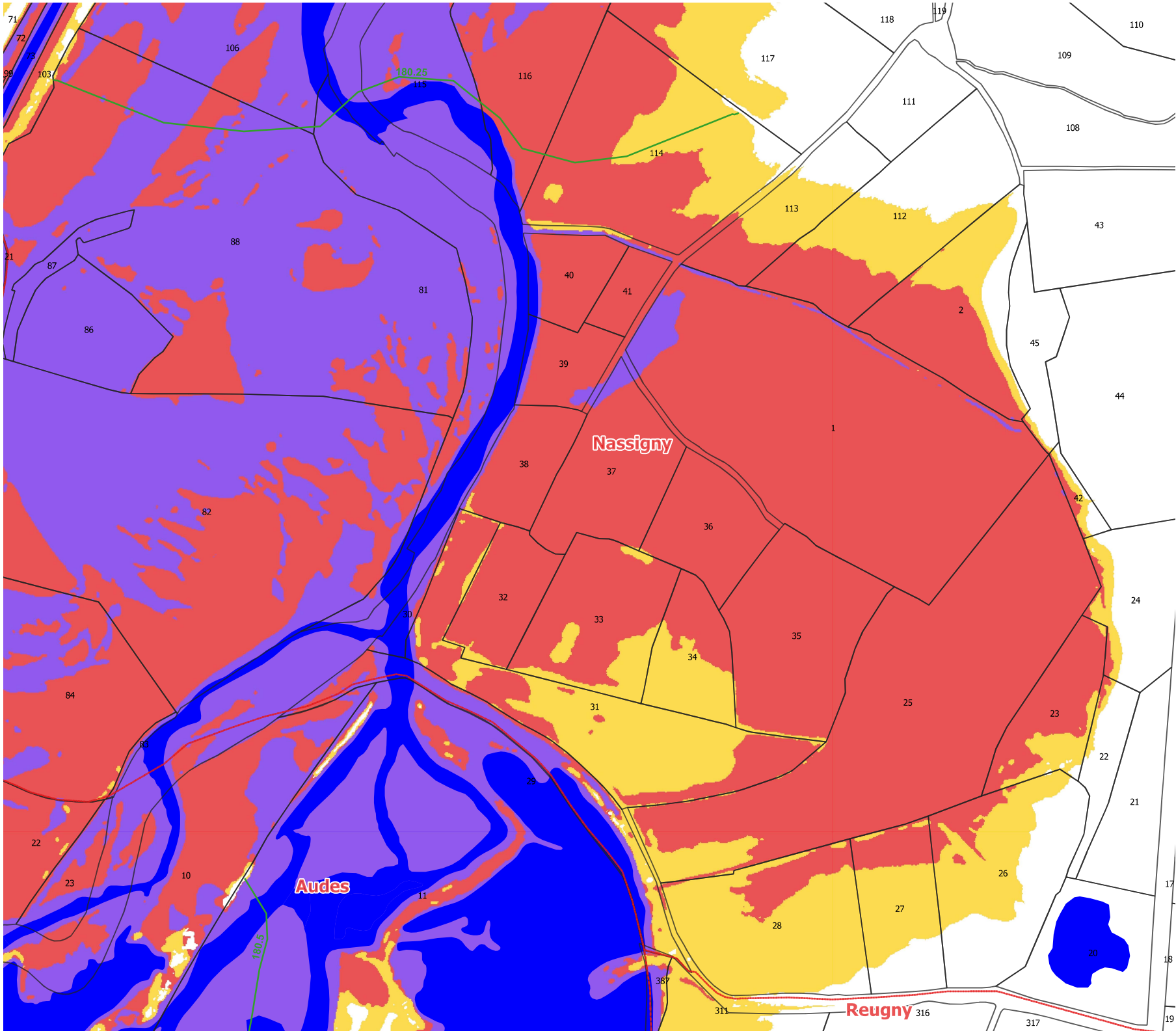
Légende :

-  Ouvrages hydrauliques
-  Limite précision MNT
-  Surfaces en eau
- Aléa
 -  Modéré
 -  Fort
 -  Très fort
 -  Isocotes

0 50 100 150 200 m



1:5 000

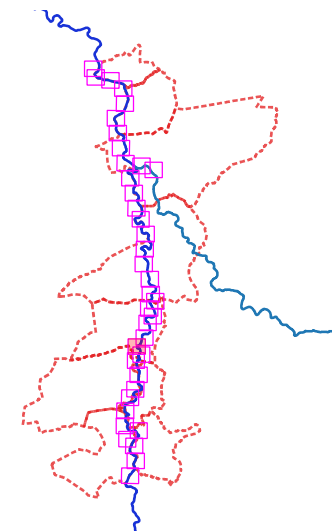


**Définition et cartographie de
l'aléa inondation de la rivière
Cher et de son affluent l'Aumance
sur le territoire du Val-de-Cher**




Aléa

Crue T = 100 ans





Carte n°13



Légende :

-  Ouvrages hydrauliques
-  Limite précision MNT
-  Surfaces en eau

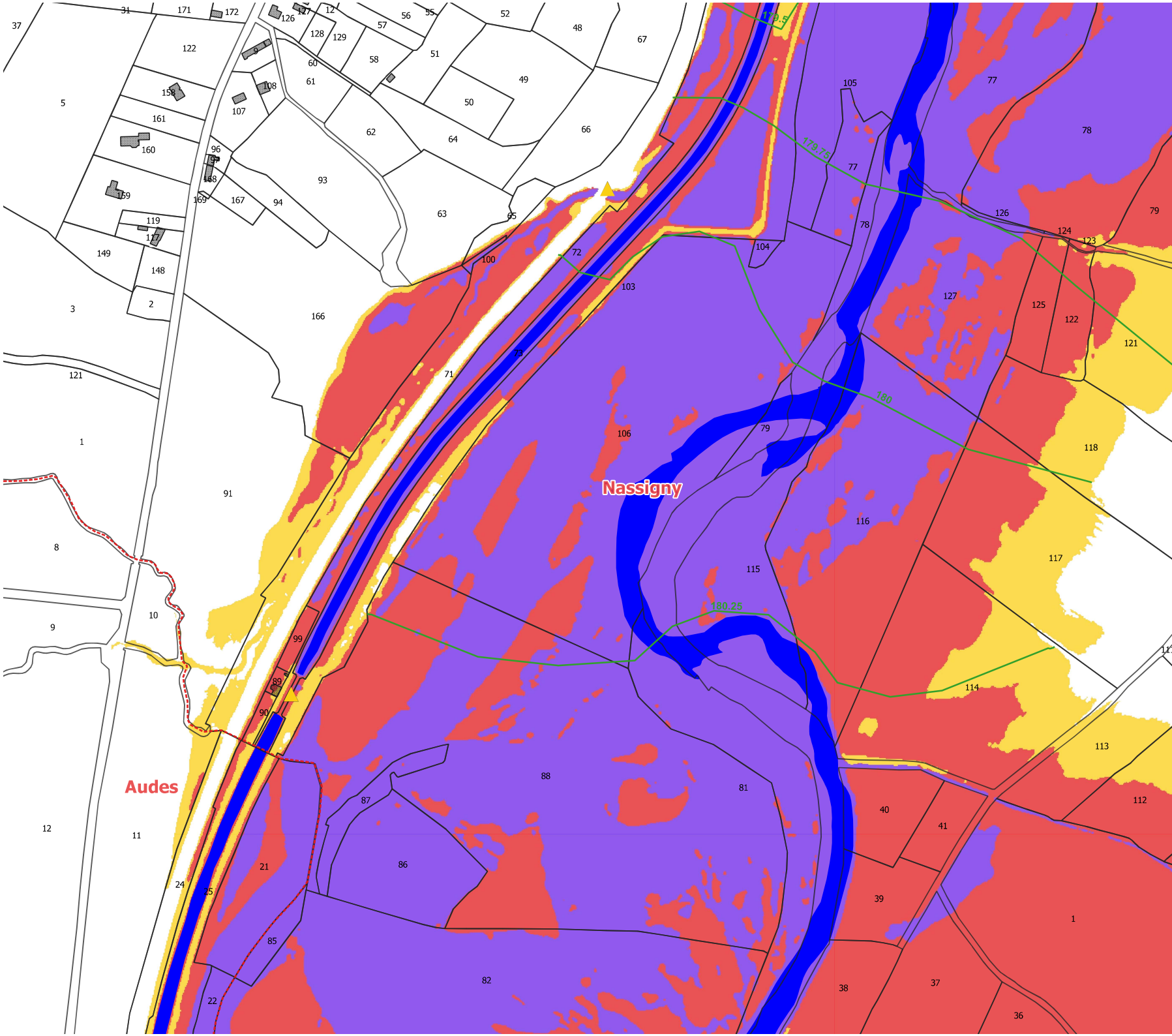
Aléa

-  Modéré
-  Fort
-  Très fort
-  Isocotes

0 50 100 150 200 m



1:5 000

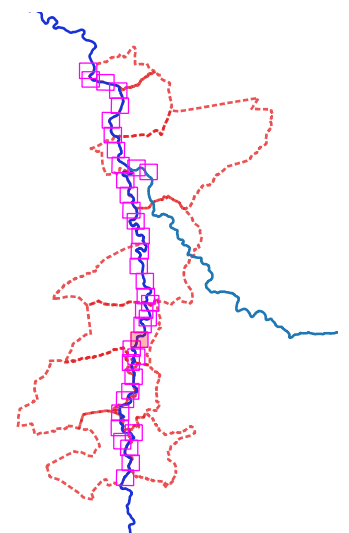


**Définition et cartographie de
l'aléa inondation de la rivière
Cher et de son affluent l'Aumance
sur le territoire du Val-de-Cher**



Aléa

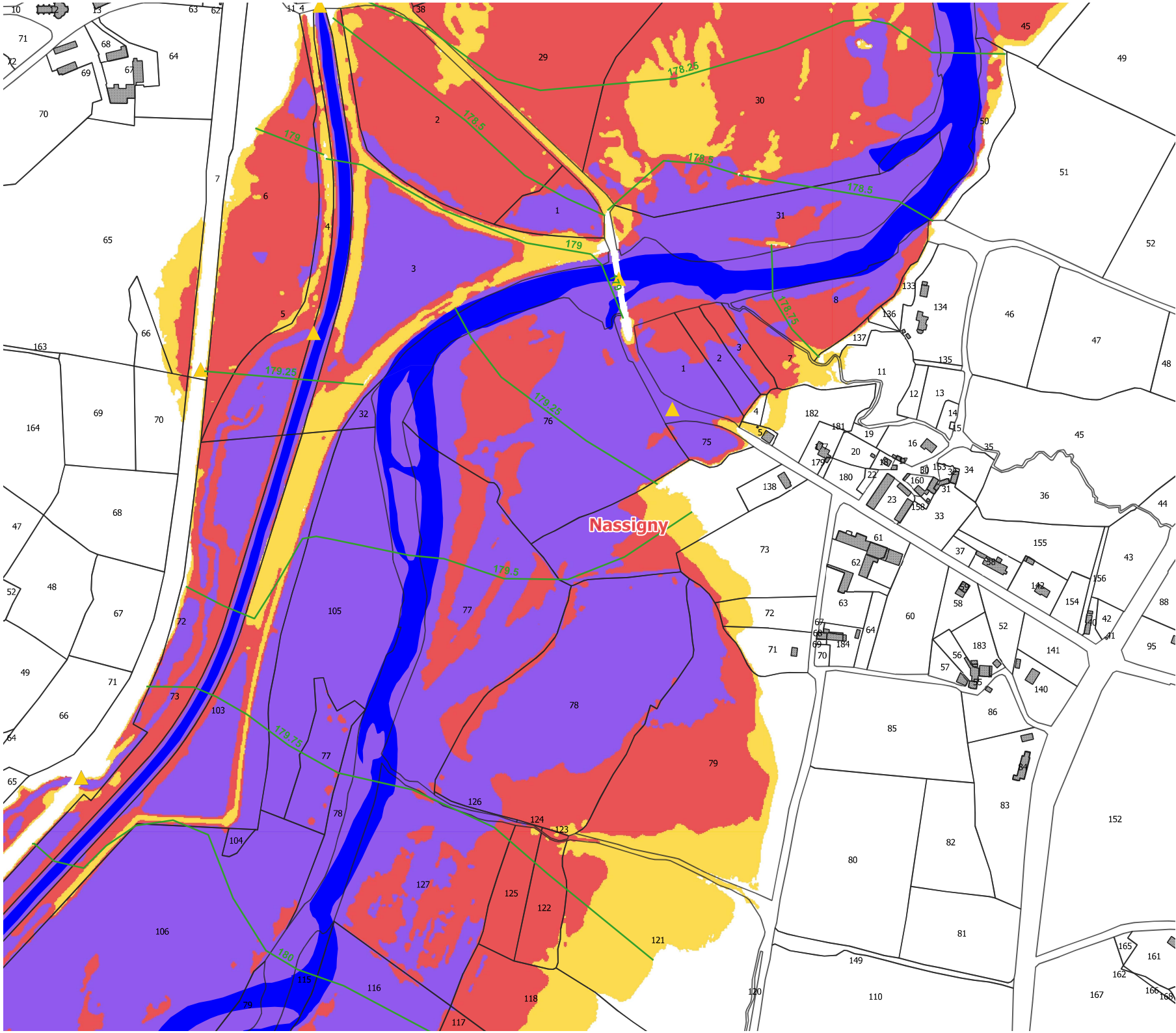
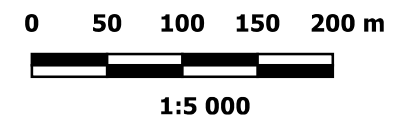
Crue T = 100 ans

Carte n°14



Légende :

-  Ouvrages hydrauliques
-  Limite précision MNT
-  Surfaces en eau
- Aléa
 -  Modéré
 -  Fort
 -  Très fort
 -  Isocotes

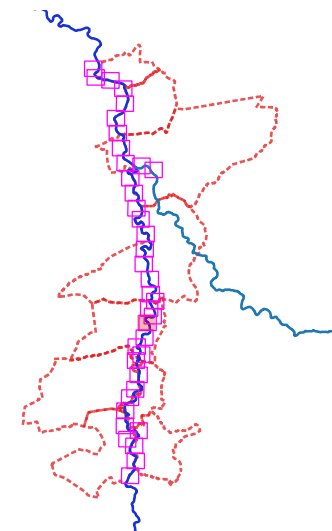


**Définition et cartographie de
l'aléa inondation de la rivière
Cher et de son affluent l'Aumance
sur le territoire du Val-de-Cher**




Aléa

Crue T = 100 ans




Carte n°15



Légende :

-  Ouvrages hydrauliques
-  Limite précision MNT
-  Surfaces en eau

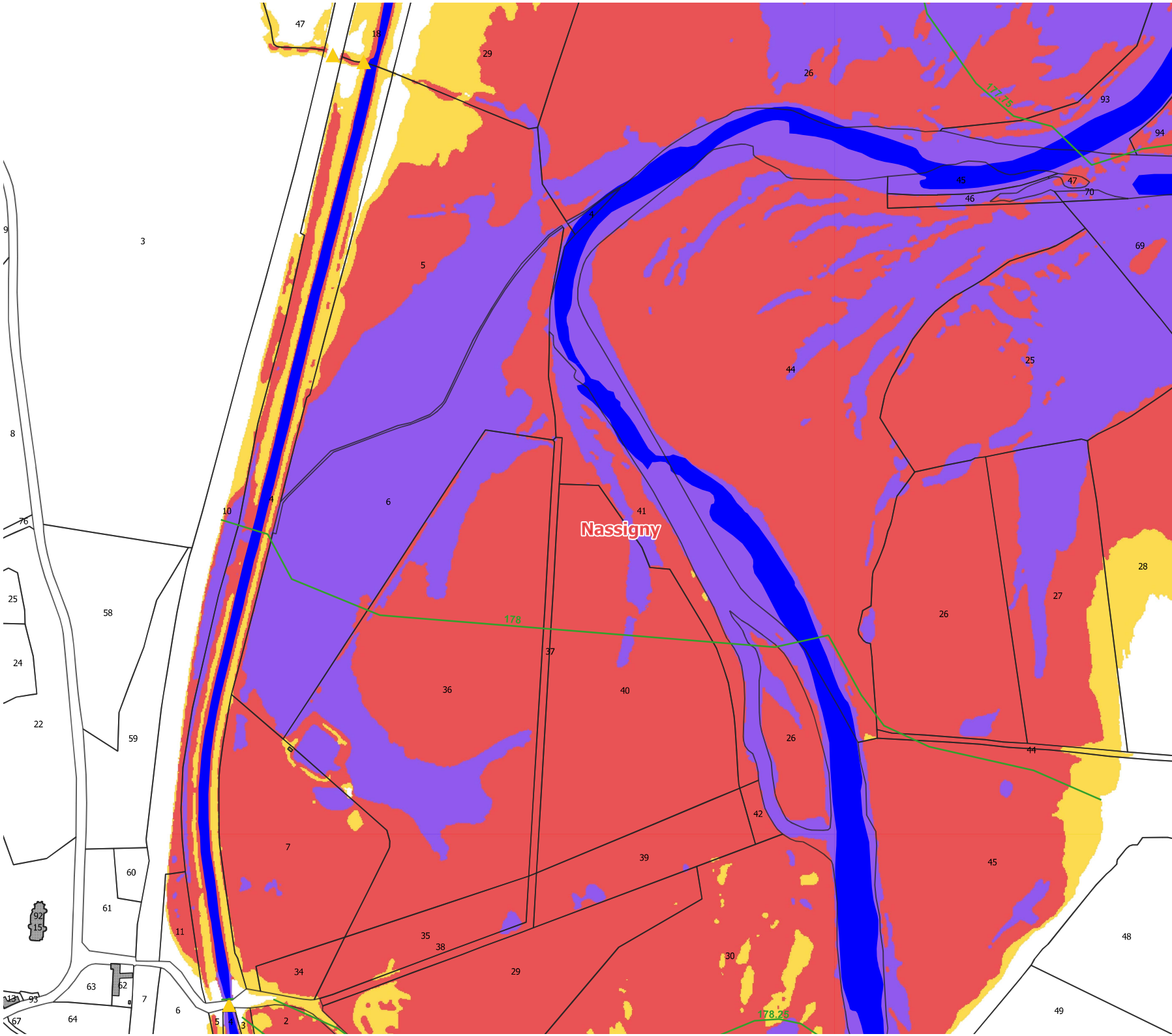
Aléa

-  Modéré
-  Fort
-  Très fort
-  Isocotes

0 50 100 150 200 m



1:5 000

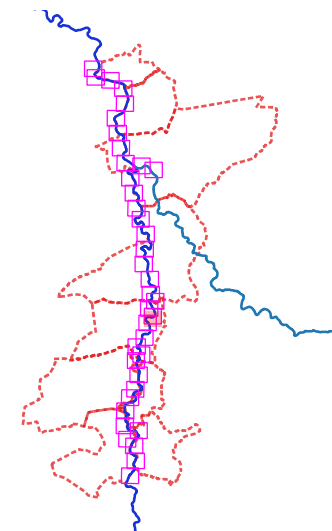


**Définition et cartographie de
l'aléa inondation de la rivière
Cher et de son affluent l'Aumance
sur le territoire du Val-de-Cher**






Aléa

Crue T = 100 ans

Carte n°16



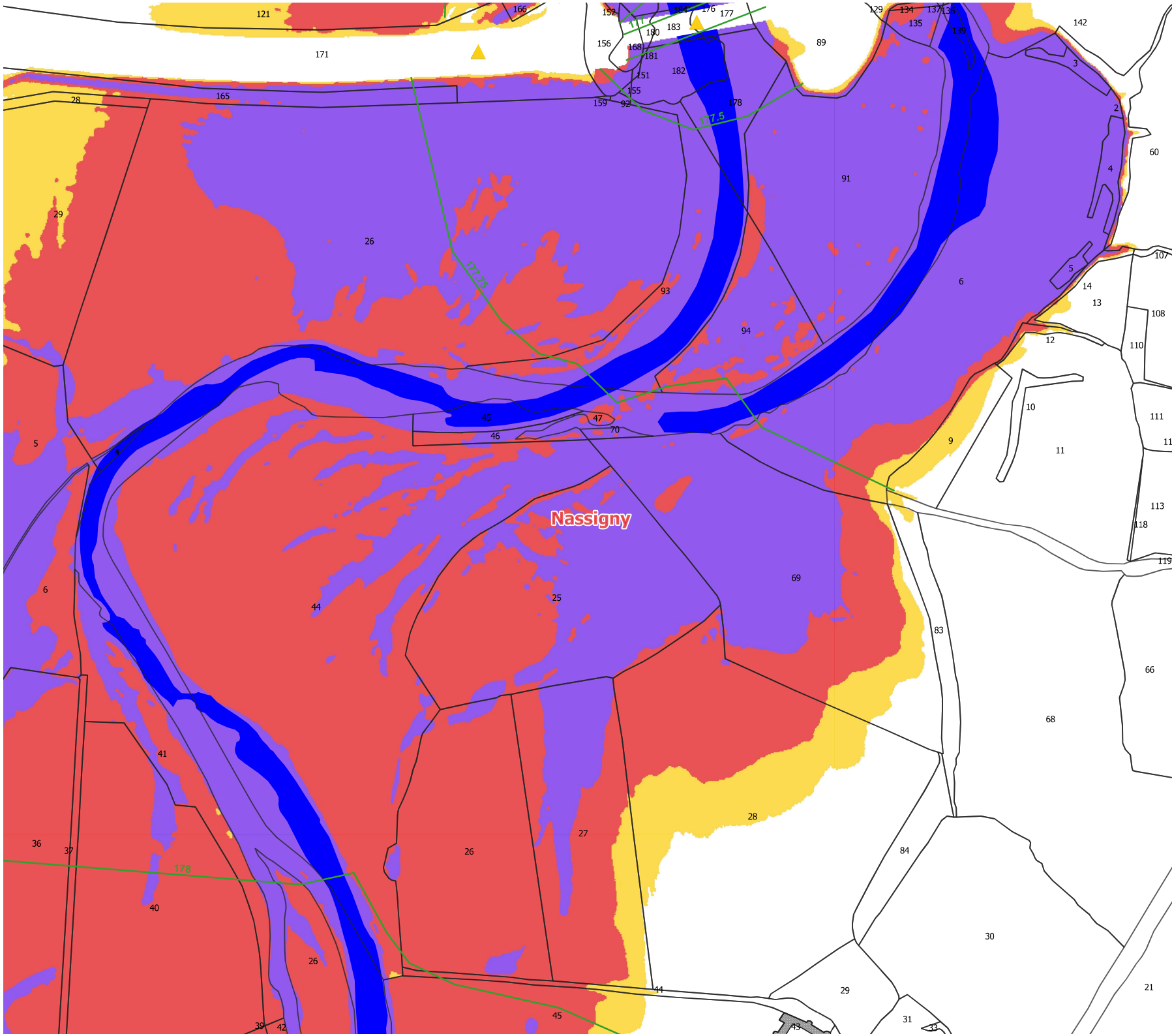
Légende :

-  Ouvrages hydrauliques
-  Limite précision MNT
-  Surfaces en eau
- Aléa
 -  Modéré
 -  Fort
 -  Très fort
 -  Isocotes

0 50 100 150 200 m



1:5 000

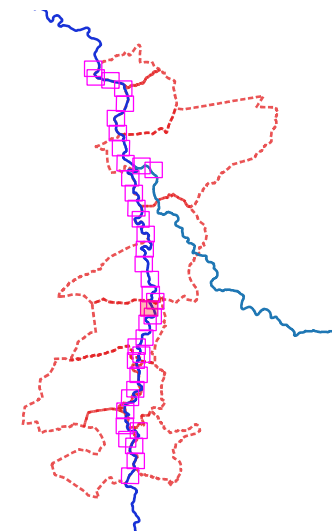


**Définition et cartographie de
l'aléa inondation de la rivière
Cher et de son affluent l'Aumance
sur le territoire du Val-de-Cher**




Aléa

Crue T = 100 ans





Carte n°17



Légende :

-  Ouvrages hydrauliques
-  Limite précision MNT
-  Surfaces en eau

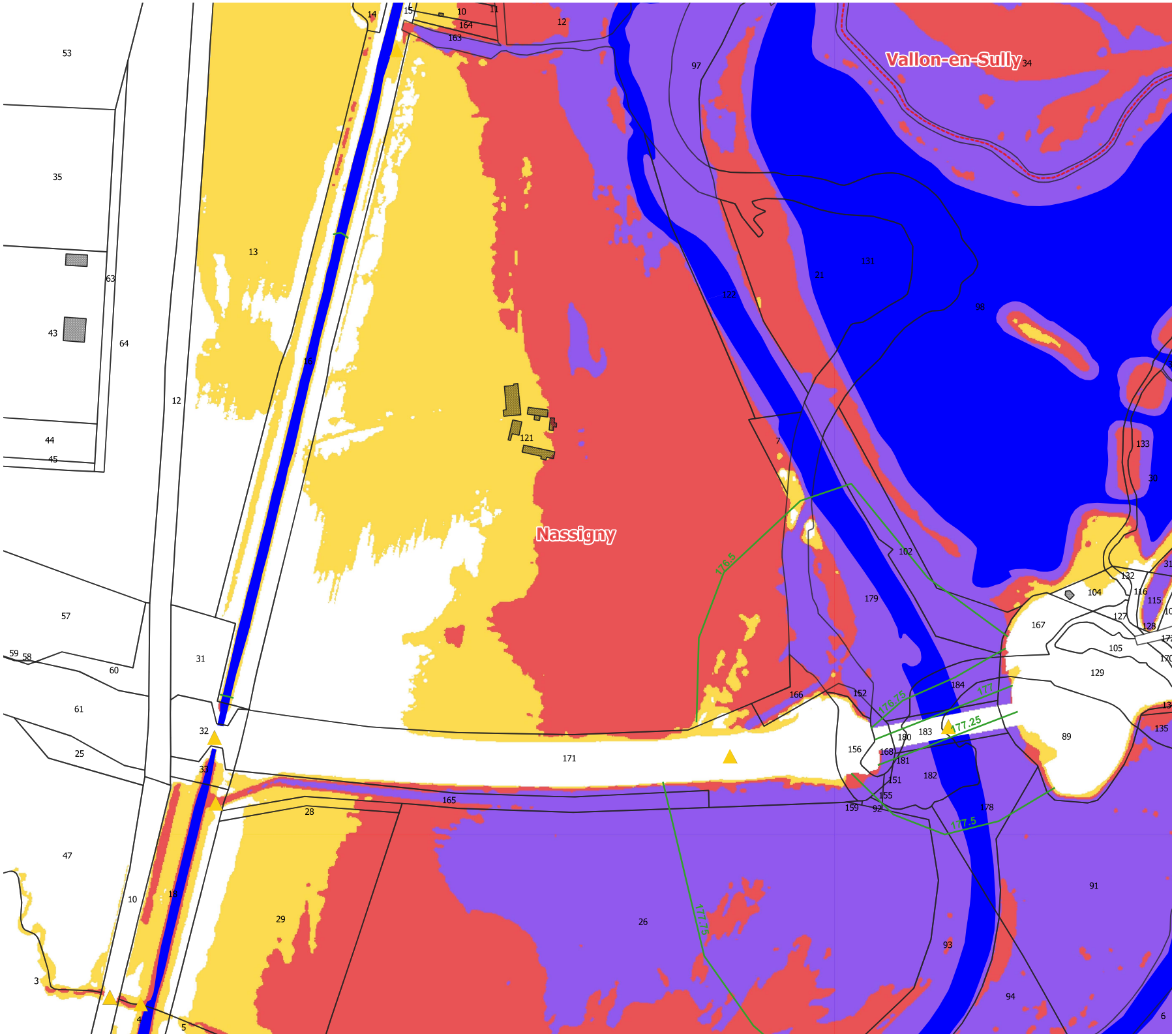
Aléa

-  Modéré
-  Fort
-  Très fort
-  Isocotes

0 50 100 150 200 m



1:5 000

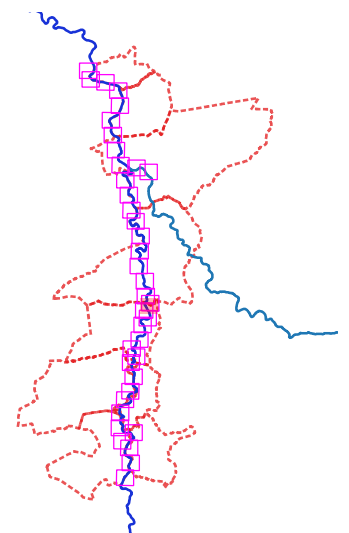


Définition et cartographie de l'aléa inondation de la rivière Cher et de son affluent l'Aumance sur le territoire du Val-de-Cher

Aléa

Crue T = 100 ans

Carte n°18



Légende :

- ▲ Ouvrages hydrauliques
- - - Limite précision MNT
- Surfaces en eau
- Aléa
 - Modéré
 - Fort
 - Très fort
 - Isocotes

